

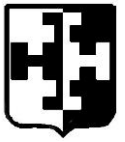


**THE UNITED BENEFICE of ST LUKE'S,
ENDON with ST CHAD'S, BAGNALL**

Encounter, Encourage, Enable ... Committed to Sharing God's Love

Vicar: Rev Alan Betts Tel: 01782 502166

alan@endonstlukes.org.uk www.endonstlukes.org.uk



February 2019



**SAMARITAN
SUNDAY**

Special Services on

Feb 3rd led by

Roger Simpson

and Barrie Jackson

"For a caller who doubts whether they can get through the night without serious self-harm, an appointment with a psychiatrist in six weeks time is a fat lot of use." Roger

Samaritans 116 123 (free)

Reminder....Alpha

Our new Alpha course started on Wednesday, 23rd January in St Luke's chapter house.

The doors are open at 7 pm and the talk starts at 7:30 pm.



The first session was an introductory talk which is followed by 10 further sessions led by Maryanne.

There is still time to join! Feel free to invite someone or if you feel like an Alpha refresh then come yourself. If you do invite someone then it is good to accompany them to the first few sessions.

Invitations to give out are available at the back of church.

- Please pray for the whole Alpha course.
- Pray for the person or persons that you are going to invite and that you will have the right words for them.
- Invite someone! ***Cake is served!***

STOP PRESS...AN ECUMENICAL LENT

COURSE is being planned based on the film 'I, DANIEL BLAKE'. It will be held at Endon Methodist Church on Monday evenings. It is also hoped to have a daytime session. Listen up for further details.

Services for February

ST LUKE'S

3 rd	SAMARITAN SUNDAY 9.15am MORNING PRAYER – Roger w Barrie 11.00am CONNECTIONS at St Luke's Primary School
10 th	9.15am HOLY COMMUNION – Rev Alan 11.00am CONNECTIONS at St Luke's School
17 th	9.15am MORNING PRAYER – Barrie and Debbie 11.00am CONNECTIONS at St Luke's Primary School
24 th	9.15am HOLY COMMUNION – Rev Alan 11.00am CONNECTIONS at St Luke's Primary School

ST CHAD'S

3 rd	9.00am HOLY COMMUNION BCP – Rev Alan 10.45am – Ian and the team
10 th	10.45am - Praise & Prayer - Kath & Muriel F
17 th	10.45am ALL AGE HC – Rev Alan
24 th	10.45am MORNING PRAYER – Kath & Muriel F

(Apologies to St Chad's for an incomplete table of services last month. Karen sent the information in time but I forgot to include it! Ros)

MIDWEEK ECUMENICAL HC SERVICES

Wednesdays at 9.15am
6th, 20th Feb at St Luke's
13th, 27th Feb at Endon Methodist Church

PCC and Annual Parochial Church Meeting

The next St Luke's PCC meeting will be held on
Thursday, March 14th at 7.30pm in the chapter house.
St Luke's APCM will be held on **Thursday 11th April at 7.00pm**
(PCC pre-meeting) with the APCM immediately following at
7.30pm also in the chapter house.



JOIN US FOR OUR LENT LUNCH

**Ash Wednesday
6th March**

**12noon – 2.00pm in chapter house
in aid of the Bishop's Lent Appeal.**

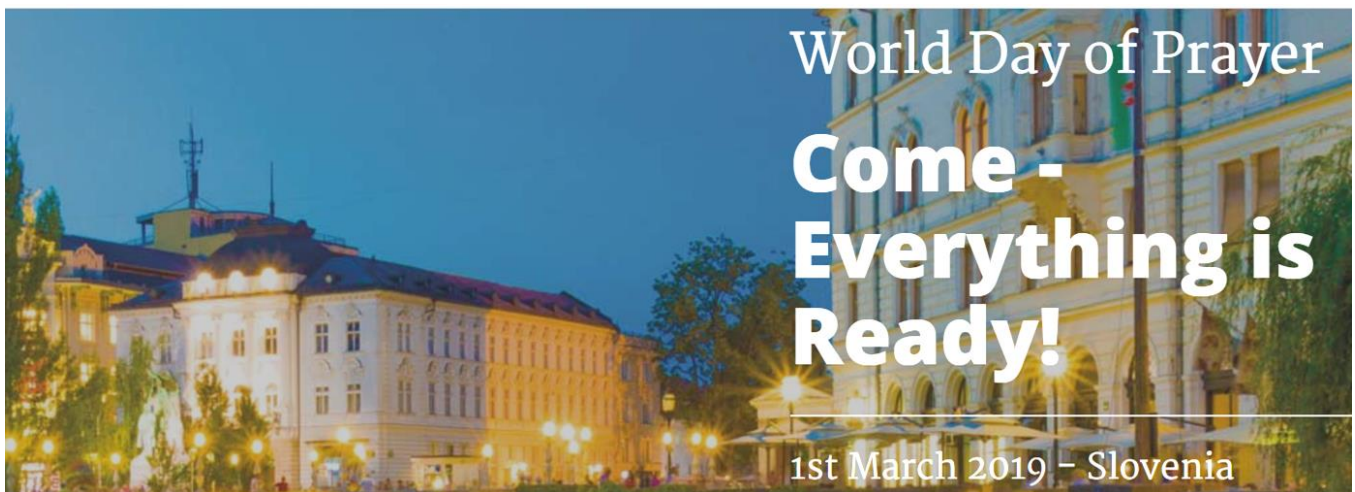
Delicious homemade soup, cheese and biscuits and fruit will be served (last orders 1.30 pm). If you can't make the lunch but would like to support the Bishop's charities please feel free to make a donation. (See Sheila H).

DIOCESAN PRAYER FOR OUR PARISHES:

God of Love, as we follow Christ in the footsteps of St Chad, we pray that the thousands of people in Endon, Stanley, Brown Edge and Bagnall encounter a church that is confident in the gospel, knows and loves its community, and is excited to find you at work already in the world. We pray for a church that reflects the richness and variety of those communities. We pray for a church that partners with others in seeking the common good, working for justice as people of hope. Amen.

MOTHERS' UNION NEWS

The Mothers' Union Wave of Prayer is in February. Our time slot this year is on **10th February** from 12.40 pm to 1.00 pm. As this is Sunday lunchtime we have decided NOT to meet in the Chapter House to pray together. Each member should have the prayers and readings as prepared by the MU. Please use these at home as near to our slot as possible.



WORLD DAY OF PRAYER

The annual World Day of Prayer (previously known as the Women's World Day of Prayer) will be held at the Methodist Church on Friday **1st March** at 2.00 pm. ALL ARE WELCOME. This year's service has been written by the women of Slovenia.

The theme is '**Come - Everything is Ready.**'

Those involved in reading at the service will need to attend the rehearsal the week before on Friday 22nd February at 2.00 pm, also at the Methodist church.



DIOCESE OF
LICHFIELD



Come follow Christ in the footsteps of St Chad

Extra Ordinary Presence

The Archdeacon's Pastoral Letter for February 2019
As we await the appointment of a new Bishop of Shrewsbury, our Archdeacon of Stoke writes this month's pastoral letter...

Though it was many years ago, it has stayed with me as a memory. Because my school was a Church of England school, we had termly evening Communion services to which parents were also invited. On this occasion there was an eminent speaker and the hall was full. After the service, I found myself, aged 16, in conversation with the speaker. I cannot recall anything of what he said to me but to this day I remember that, despite all the other people milling around us, he gave me his full and undivided attention. It was more than flattering. I sensed a real interest in me as a person and a genuine regard and encouragement.

This is in contrast to those times when we feel that the person we are with would rather be talking to someone more interesting or important elsewhere in the room. We may have been guilty of it ourselves – looking over the shoulder of the person before us, eyes flicking back and forth, scanning the crowd for the next, more rewarding (we think), encounter.

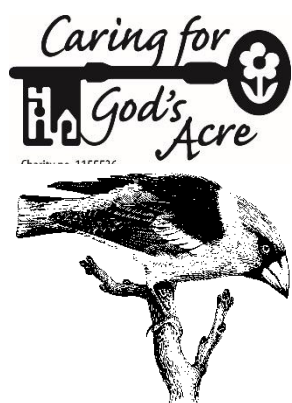
February this year is an “in-between” month. The great cycle of Christmas and Epiphany concludes at the beginning of the month with Candlemas and Lent and Easter are yet to come in March and April. This February, we return briefly in the church calendar to what is called “ordinary time”, to those humble Sundays that are “before” or “after” some great celebration. It may be that we are tempted this month – and whenever we find ourselves in those “in between” times in life – to “look over the shoulder” of the present moment to what we imagine are more exciting times ahead. It's great to be able to look forward to the future but there is the danger that we stop expecting to meet God in the present, especially if the present feels to be one

of those “in between” times. The fact is God wants to bless us *now*, speak to us *now*, call us to service *now* and not just in the future.

It’s a temptation to rush on to whatever is next. This month we are invited to practice the presence of God; to give the present moment our full regard and listen out for God’s word to us now. So we learn, as Rob Bell puts it, “how to be here”.

Matthew

*The Ven Matthew Parker
Archdeacon of Stoke-upon-Trent*



Churchyard Birds

This time of year the churchyard can seem barren and empty at first glance. However, if you wrap up warm enough and spend a peaceful half an hour sitting, you may see a variety of winter visitors such as fieldfares and redwings, both types of thrush, which migrate from colder climes. In addition, look out for song thrushes, mistle

thrushes and blackbirds which also descend on yew trees to eat the berries. Last winter saw an unusually large number of migrant hawfinches, a brightly coloured finch with a large strong bill for cracking seeds – many eager bird watchers were also to be seen in churchyards at that time!

Churchyards have acted as sanctuaries for yew trees over thousands of years. The most significant collection of old trees in Europe is to be found in the churchyards of England and Wales, where approximately 800 yews with an age above 500 years have been recorded. Churchyards are sometimes referred to as the ‘Noah’s Ark’ for yews. If you want to find out how to look after your yew we have an information sheet ‘Yews and Other Veteran Trees’ which is on our website, along with an informative short video by yew tree specialist Russell Ball.

If you do record any bird species – we would love to hear!

All the best, **Harriet Carty**

Diocesan Churchyard Environmental Advisor

harriet@cfga.org.uk

www.caringforgodsacre.org.uk

*individuals and groups in the diocese receive 20% members discount on all CfGA materials. Simply use the discount code **Lich19***

ST LUKE'S PASTORAL TEAM

Please contact Shirley Brindley on 504089 if you are available for pastoral visiting.

HILLSWOOD LODGE VISITS

Meet at Vicarage 10.50am for 11.00am

Next dates: February 21st, March 21st, April 18th



USED STAMPS

Thank you to all who brought used stamps for The Leprosy Mission.

Ros



CHRISTIAN AID SPONSORED WALK AT TITTESWORTH RESERVOIR

The date for this year's walk is **Saturday 23rd March**. This year is the 29th walk and to date the total amount raised is £968,000. The organisers are hoping to reach £1,000,000 so please enter the date in your diary. Full details and sponsorship forms will be available later.

Alan P

NEWS FROM ST CHAD'S



The Leprosy Mission

The Service at St Chad's on 27 January marked World Leprosy Day. The Leprosy Mission has asked us to pray with them for those hiding symptoms of leprosy for fear of rejection in its bid to rid Nepal of this ancient disease. Although often regarded as a disease confined to Biblical times, leprosy is a real 21st Century problem with around a quarter of a million new cases diagnosed and treated each year.

There are thousands of cases of undiagnosed leprosy in Nepal today, leaving many already living in poor conditions disabled and shunned because of stigma and fear. Leprosy causes nerve damage leaving hands and feet numb and vulnerable to wounds, leading to infection, amputations and permanent disabilities. The problem is made worse when the stigma of leprosy means the person is outcast and often extremely poor. Many have no access to healthcare, and live in makeshift homes where poor sanitation presents a constant threat.

Twenty-five-year-old Ram lives in Nepal and used to work as a stonemason, a job requiring intricate craftsmanship, but is no longer able to work after leprosy caused his hand to claw. Ram is newly-married but his young wife is unaware his disability is caused by leprosy. Ram is afraid his wife might not accept him if she knew the truth. Often there is fear around leprosy in communities like Ram's, where this ancient disease can be seen as a curse.

But everyday leprosy patients are being met by outreach workers, diagnosed, given the cure, and nurtured back to health at Anandaban Hospital in the foothills of the Himalayas. Anandaban Hospital is a light in the darkness for Ram, a hospital shining bright on a hill. It was at Anandaban Hospital that Ram received life-changing surgery to straighten his fingers. Having been loved and nurtured back to health by the caring staff at Anandaban Hospital, he is beginning to find the inner-strength to claim back what leprosy has taken from him.

Just as Jesus reached out to the man with leprosy and gave him complete healing – physically, emotionally and spiritually – The Leprosy Mission is

asking Christians to follow our Lord's example by praying for and supporting its 'Heal Nepal' campaign.

'Heal Nepal' will not only train local leaders to find people affected by leprosy and get them the cure. It will also provide love and acceptance. It will help people regain their mobility and reclaim their income, their freedom, their dignity. People with leprosy are often hidden in remote, hard-to-reach villages and mountainous areas, and Heal Nepal will help train local workers to find people and get them the cure before leprosy takes hold. For those who have already been seriously affected by leprosy, Heal Nepal will bring them to Anandaban Hospital for vital treatment such as physiotherapy, surgery and prosthetic limbs.

It costs just £24 to find and cure somebody with leprosy. And the amazing news is that thanks to UK Aid Match, from 27 January to 27 April 2019, your donation will be doubled by the UK government. So if you give £24 to find and cure one person from leprosy, you are actually helping two people.

BBC Songs of Praise presenter Pam Rhodes recently visited Anandaban Hospital. Pam said: "Leprosy has been completely curable for over 30 years yet still has the power to crush and oppress our brothers and sisters. The staff at Anandaban Hospital is on a Christ-like mission to heal and love people with leprosy."

Visit www.healnepal.org.uk or ring 01733 370505 to find out more.

Morning Prayer

At the request of some members of the congregation, St Chad's tried two services in September and November just using the Morning Prayer leaflet. People were then asked to give their comments.

There was a good response both in writing and verbally and the comments ranged from "If it ain't broke, don't fix it" to "variety is the spice of life" with everything in between. Seriously, though, some people preferred the more solemn, meditative form of the traditional service, whilst others enjoyed the livelier, light hearted format as at present. There were also a number of people who came to St Chad's to worship and were happy to do just that whatever form the service took. All ages and genders participated and everyone's views were considered.

After a very lively discussion at the PCC meeting on Monday 6th January,

some decisions were made concerning the format of the Morning Prayer service on the 4th Sunday of each month.

In true democratic principle a compromise was reached. Kathryn and Muriel will “adjust” the Morning Prayer leaflet to accommodate the present format, but with the opportunity to use alternatives. There will be the normal opening activity or “setting the scene”, and different confessions and creeds where appropriate and the usual summary. However, the tone of the service will possibly be quieter and thoughtful. The new card will be ready for approval at the next PCC meeting in March, and should be ready to use thereafter.

Christmas card

The money raised from our giant Christmas card and the Journey to Bethlehem has reached £255. This will be passed on to Horton Lodge special school as soon as possible. Thanks to everyone who contributed.

Don't forget.....

The church will **NOT** be open on a Wednesday morning during the winter months.

Creative Corner craft club

Meeting dates until Easter: **Feb 11th & 25th, March 11th & 25th, April 8th**

Sheila Tipper



'We echo the call of Churches Together in Britain and Ireland to Christians and all those of faith and goodwill to give time for prayer beginning this Sunday in their local churches or as they choose: praying for wisdom, courage, integrity and compassion for our political leaders and all MPs; for reconciliation; and for fresh and uniting vision for all in our country.

Archbishops Justin Welby and John Sentamu



All Welcome at 11.00am every Sunday

in St Luke's Primary CE Academy for 35 minutes followed by refreshments, time to chat and play.

Our current theme is...

“Don't leave the baby in the cradle!”

We are following Jesus through the Gospel of Luke.

Jan 27th Road Trip to Jerusalem – living a new way. LUKE ch 9-10

Feb 3rd A New Beginning? But it seems like the end! LUKE ch 19-23

Feb 10th The Journey Continues. LUKE ch 24

ST LUKE'S TABLE TOP SALE



We are holding a table top sale on

Saturday, 16th March

2-4 pm

in Endon Village Hall

If you would like to book a table (£10)
please get in touch with Maryanne

01782 502166

FLOWER ARRANGING

Dates for your diary...



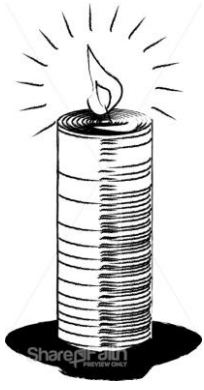
23rd January
6th and 20th Feb
20th March
3rd and 17th April



Sessions are led by Pauline Shaw and Jeanette Lackey from Endon Floral Arts and take place fortnightly on Wednesdays in St Luke's chapter house from 1.00pm to 3.00pm.

Please note...there will be no session on Wednesday, 6th March as the chapter house will be in use for our Lent lunch. (All are welcome of course to come along to that instead.)

It is hoped to extend this session to make it more like a 'Knit & Natter' group to attract more folk who may not want to arrange flowers but would welcome the chance to get out of the house and meet others over a cup of tea. Spread the word!



CANDLE DEDICATIONS for FEBRUARY

For £2.50 you can keep the Candle of Hope or the Sanctuary Light burning for a week with a dedication. Contact Shirley Brindley on 504089 for a particular date or fill in a form at the back of church. Please note that Shirley is using a new list.

Feb	CANDLE OF HOPE	SANCTUARY LIGHT
3 rd	Mabel McGrath in loving memory of her brothers William and Joseph	Sheila and Stan Hurst in loving memory of Stan's parents
10 th	Margaret and Maurice to celebrate Amber's birthday (10 th)	Sheila and Stan Hurst in loving memory of Sheila's parents
17 th	Sheila and Stan in loving memory of dear Aunts	Anon in loving memory of Fred and Alice Jones
24 th	Linda Foster in loving memory of her mum on her birthday	The candle is kept burning this week by June and Peter Pope



FEBRUARY GREETINGS to

Robert Harrison (2nd), Dan Benson (6th),
Amber Woolliscroft (10th),
Jean Brough (11th), Sheila Hurst (17th),
Bertie Thomlins (21st),
John Bradshaw jun (24th), Rev Alan (27th)

If you would like your own or a family birthday included here contact Ros 504137



Home Groups

are a way of studying the bible in a relaxed and friendly atmosphere. We can ask the questions that we do not always have time to on a Sunday. Not only do home groups help us on our journey of faith but they also strengthen the relationships within church. At the moment a group meets at James &

Ros's on a Monday evening and a group meets at Bagnall Heights on Tuesday morning.

Day	Venue	Hosts	Leader	Time
Monday	Claremont St George's Ave	James & Ros	Maryanne	7.30pm
Tuesday (NB 2 nd week of the month, this is replaced by HC on Wednesday.)	Bagnall Heights Lounge	Pauline & Bill Proudman	Barrie Jackson	11.00 am



NEWS FROM REV JULIE

Rev Julie has shared with us that her term of ministry in Endon will come to an end this summer. As you may know she will be getting married to Richard in July. She will then be based in Cheadle as Superintendent Minister for the Methodist Staffordshire Moorlands

circuit. Her successor will be Rev Eleanor Smith who will be coming from Lincolnshire but knows our area well as she used to work for Staffordshire Moorlands District Council in Leek. We shall all miss Julie but we hope to keep in touch with her. We continue to pray for both Julie and Richard and that the Lord will richly bless their lives together. We have enjoyed a very good relationship with folk at Endon Methodist Church for many years and we are sure that will continue.

CHERNOBYL CHILDREN'S PROJECT (UK)

ПОДДЕРЖКА ДЕТЯМ БЕЛАРУСИ

Supporting Children of Belarus since 1995

Charity No 1059832 www.chernobyl-children.org.uk

Plans for 2019

Mums & Children

April for 3 weeks - dates can be flexible, requiring a 10 day commitment from each host. We need to know before February's meeting if we have enough hosts to invite a group. Please let us know asap if you would like to host a mum and child or 2 mums and children 01782 535000.

Teenagers in Remission from Cancer

We should like to invite at least 16 teenagers along with interpreters and a doctor. The teenagers will be between 16 and 18 years old. All are in remission from cancer and invited for 4 weeks spending the first two weeks with host families and the second fortnight altogether.

Dates: Arriving Manchester Saturday 20th July and returning Saturday August 17th. We have confirmed use of Cicely Haughton School for the second fortnight. **All new host families need to complete a DBS form. We need to confirm by our March meeting, how many families would like to host this year.**

Helpers will be required for the second half of the holiday for driving, cooking, cleaning, laundry etc. So if anyone is unable to host but would like to be involved, this is a good opportunity to help. Julie will be coordinating Cicely Haughton - please get in touch 01782 535000. Activities will be arranged as usual, along with dentist and opticians. If anyone has any contacts or suggestions for trips please let us know.

Finance update from Sheelagh

Current total £6025.22. Many thanks to Ingrid and Nigel for organising the Chinese Meal which raised £2,600. Sheelagh received a £500 donation from The Red House Clay Shooters. The Market stall has raised £3,534.65 since the beginning of October, the start of CCP's financial year.

The Market Stall in Stoke:

Thank you to all our volunteers but we need more help, so if you can spare a few hours please let us know. The stall is open on Wednesday, Friday and Saturday. A constant

supply of bric a brac is required. Any unwanted Christmas items would be gratefully received - so get clearing out please!

Fundraising :

Our target is £20,000 this year.

Saturday 2nd February Beetle Drive

This is a great family evening of fun. Location: St. Paul's Church, Novi Lane, Leek, 5.30 pm

Tickets: Adults, £7.50 each and Children £5.00 each

Hot beef baps will be served, we have 100 tickets but will need to sell at least 60 tickets so we can place the food order.

Monday 4th February, Curry Night

Location: Spice Exchange in Milton 7 pm for 7.30 pm. There will be a meal, auction and raffle with tickets at £20 each, menus will be distributed

Contact John and Julie 07816 842322 or email julie.ccp@gmail.com

Friday 26th April, Dinner and Auction

(To commemorate the anniversary of the Chernobyl nuclear disaster)

Location: Westwood Golf Club, Leek

£30 tickets includes a 3 course meal, coffee and disco

Contact John and Julie for further information

Endon Well Dressing - End of May Bank Holiday Weekend

Ian and Sheelagh have done an amazing job over the years organising the well dressing stall and raising lots of money but will be stepping back this year. We need volunteers and lots of soft toys and prizes to give away. We will also be organising the car boot sale so volunteers will be great.

Help with Letters!

Is there anyone who can help by sending letters and going round shops/businesses to ask for support with auction/raffle items?

Fundraising Ideas:

Suzan recently went to the Stafford's group Fashion Show fundraiser - this could be something that we could organise.

John suggested a sponsored skydive, parachute jump or bungee jump would be of any interest - let us know if you think this is something you might want to do.

If anyone has any other ideas for fundraising please let us know - all ideas welcome.

**Our next meeting will be on Wednesday, February 13th
at 7.30pm at Endon Methodist Church.**

LEEK FOOD BANK UPDATE



It has been a very busy period. Many donations have been received for which we are grateful, but our stocks have been going out as fast as it they have come in.

Every morning we wondered how we were going to store any more food, and every afternoon we wondered how we were going to fill our shelves again ready for the next session. We have been thankful to God that the balance has been just about been maintained, though we had to buy in some goods and fortunately we had the resources to do that.

Currently we would particular welcome...

- UHT milk, skimmed, semi or full cream
- Coffee
- Mash
- Jam
- Custard
- Sponge puddings
- Tinned fruit
- Fruit cordial
- Sturdy carrier bags
- Hair conditioner
- Women's deodorant
- Toothbrushes
- Dog food

We have plenty of...

- Porridge
- Soup
- Cereals
- Soap
- Pasta
- Baked beans

Because of the impossible challenge of entering information into the computer on each given session the following statistics apply for the dates 1st December to 16th January. It will mean that next month the figures will be somewhat lower as a result.

During this period, we honoured 72 vouchers representing 103 adults and 94 children totalling 197. Last year over the same period 1st Dec – 16th Jan we honoured 88 vouchers representing 129 adults and 1 child totalling 230 people.

Over this period we have had lower demand. Verbal accounts of business are not to be lightly discounted as it may be that the distribution rate this year was more focussed in the two weeks before Christmas than was the case last year.

It is the case that overall there was lower demand, but this may or may not mean that people are in less need – it may simply be that they aren't being directed to the foodbank.

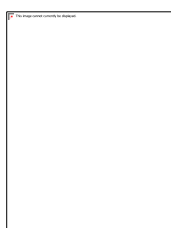
Whatever the exact situation it remains clear that there is still great need for the foodbank services, and we are grateful to all who have donated food and finance to the foodbank over this period. It has been vital in keeping us going.

A total of 3165 kg (3806 for last year) left the warehouse and 3838 kg (3812 for last year) came in which is a reasonable position to be in after the Christmas period.

MANY THANKS FOR ALL YOUR HELP!

Peter Davies

Leek and District Foodbank Project Coordinator



Fair trade status

St Luke's is a fair-trade church. If you donate items to the catering cupboard, please check that they are Fair Trade, Ethical Tea Partnership or similar organisations that guarantees small traders are not disadvantaged.

DEANERY SYNOD

The next meeting will be held at St John's Church, Knypersley, on Tuesday **12th March**. The speaker will be Rev Darren Fraser with the subject "**People who are confident in the gospel**". This takes the first part of the Diocesan vision statement and continues the theme for 2019. See prayer on p4.

CBM

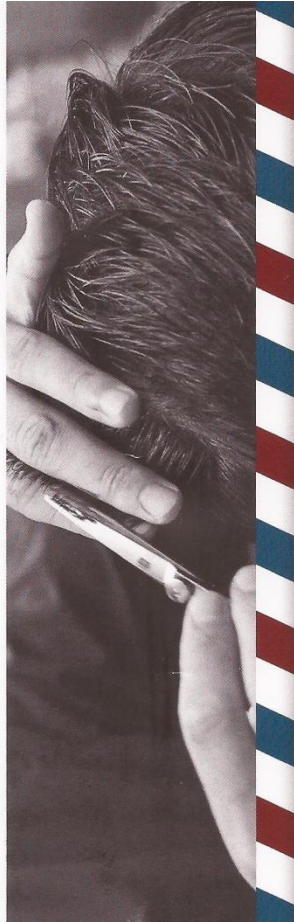
Thank you to all who contributed to the Christmas appeal for Christian Blind Mission by sending Christmas greetings via the newsletter. The total raised was £155. A cheque will be sent off to CBM very soon.

Dan's



B A R B E R S

A F A M I L Y R U N B U S I N E S S



**APPOINTMENTS AVAILABLE
MONDAYS & THURSDAYS FROM 4PM**

**OAP CUTS
£6.00**

OPENING HOURS

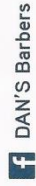
SUN	CLOSED
MON	10am - 6pm
TUE	9am - 5pm
WED	9am - 5pm
THU	9am - 3pm
FRI	9am - 5pm
SAT	8am - 3pm

**NB Now closed on
Mondays**

07500 545455

2 Regent St,
Leek, Staffordshire

Find us on Facebook



DAN'S Barbers

Xbox also available for the kids!



let us make
your dream a reality...

we install kitchens,
bathrooms, bedrooms,
studies & media rooms



The Kitchen Station

Station Building, 28 Leek Road
Stockton Brook, Staffordshire ST9 9NH

t: 01782 502106
m: 07720 846 270

www.thekitchenstation.co.uk

February Prayer Focus

- Our global warming crisis - that world leaders will take appropriate action urgently
- Family and friends of footballer Emiliano Salo and pilot David Ibbotson in the plane missing off the island of Alderney
- The current unrest in Zimbabwe and Venezuela
- Those affected by the recent upsurge in knife crime
- The release of Iranian-British mother Nazanin Zaghari-Ratcliffe serving a 5 year gaol sentence on alleged spying charges
- The people of Indonesia affected by the recent earthquake and tsunami
- The problem of social media affecting our young people and leading them to self harm or even suicide
- The widespread drug problem especially in Stoke-on-Trent with use of "monkey dust"
- For the people in the Yemen facing starvation, an end to hostilities and for vital aid to get to where it is needed
- All helping to re-build thousands of shattered lives
- Archbishop Justin Welby and our Queen and their messages for more love, tolerance and understanding
- Medical teams and relief agencies
- Those starving in Nigeria, Somalia, South Sudan and all the aid agencies working there
- The problem of the millions of plastic bottles afloat in our oceans and the tons of 'space junk' orbiting our planet
- Brexit negotiations especially the problem of the Irish border
- Wisdom for world leaders in making decisions for peace
- Those in our parishes who are ill and those caring for them especially Rev Julie
- For all refugees and asylum seekers
- All who have lost loved ones recently
- Schoolgirls kidnapped in Nigeria and anguished parents
- For the abolition of slavery and female genital mutilation
- The Trussell Trust locally
- The unemployed or in work but not earning a living wage
- For all suffering from depression
- For all involved with the Chernobyl Project
- Our Vicar, PCCs and Pastoral Team and visitors to our church
- For Barrie Jackson in his ministry as a lay reader
- Our MPs and district and parish councillors

Advertising Scale of Charges

1/8 page: £2.50 per month
or £25 for 12 months

1/4 page: £5 per month
or £50 for 12 months

1/2 page: £10 per month
or £100 for 12 months

1 page: £20 per month
or £200 for 12 months

If you would like to place an
advertisement
please contact Ros on 01782 504137
or e-mail:

jandrbenson@btinternet.com

Carpet & Upholstery Cleaning

Curtains, Oriental Rugs,
Leather Cleaning
and Carpet & Fabric Protection

Eradicates Dust Mites and helps improve
the air quality for Asthma sufferers.



J. TAYLOR

Tel: 01782 502437

ST LUKE'S CHURCH BOOKINGS

Barrie Jackson is keeping the church diary.
Please contact him on **07510 074097**.

No charge is made for this newsletter but donations are welcome towards stationery and copying. Please see a warden or put your donation in the green box on the wall. You can 'gift aid' your donation if you pay tax (see Sheila Hurst). Thank you to all regular contributors.

WINTER WEATHER WARNING...

If heavy snow arrives on a Saturday night/Sunday morning please listen to Radio Stoke for up-to-date bulletins as to whether services will be taking place. This keeps phone lines clear for our worship leaders to liaise regarding decisions to cancel or go ahead. They would then be responsible for 'phoning Radio Stoke. Those with internet please consult St Luke's web page or Facebook site for a message from Maryanne.

Rev Alan Betts / Maryanne Lloyd	502166
Roger Simpson, St Luke's warden	502006
Maurice & Margaret Woolliscroft, warden's team	502390
Alan & Maureen Payne, warden's team	504918
Ann & Les Boulton, warden's team	503162
June Pope, warden's team	503269
John O'Rourke, warden	261191
Lyn Pickering, warden's team	07891 213284
Caryl Siegertsz, St Chad's warden	07971 887039
Sheila Tipper, St Chad's news contact	534647
Kath Howell, St Chad's PCC chair / worship l'der	07971 887039
Muriel Finney, St Chad's worship leader	302229
Fred Snape, St Anne's warden	504063
James Benson, St Luke's reader emeritus	504137
Ros Benson, newsletter	504137
Barrie Jackson, reader / St Luke's PCC Sec / Administrator	07510 074097
Deb Podmore, worship leader	773383
Suzy Jordan, music leader	504589
Steve Dale, St Luke's treasurer	07894 098011
Sheila Hurst, St Luke's Gift Aid Sec / MU rep	503622
Neil Taylor, worship team	07891 977662
Shirley Brindley, candle dedications / pastoral tm	504089
John & Julie Gater, Chernobyl Children's Project	535000
Sheila Simpson, St Luke's Electoral Roll Officer	502006
St Luke's vestry	504864

March 2019 newsletter will be in church on
Sunday, February 24th

Please submit notices by **Tuesday, February 19th**
either by e-mail jandrbenson@btinternet.com phone 504137
or a note to Ros Benson.

The newsletter is published on the church website
www.endonstlukes.org.uk (click on the 'News and Events' tab)

**If you would like a large print version
please contact Ros.**