



**THE UNITED BENEFICE of ST LUKE'S,
ENDON with ST CHAD'S, BAGNALL**

Encounter, Encourage, Enable ...Committed to Sharing God's Love

www.endonstlukes.org.uk

Vestry (church office): 01782 502166 or 07517 653370



August 2022

INTERREGNUM Month 26

Join us for

AFTERNOON TEA

**Thursday September 15th at 2pm
in the Chapter House.**

**Tickets on sale in August
at £10 per person.**

More info from Shirley Brindley.



AUGUST at ST LUKE'S

SUNDAY 7th

9.15am HOLY COMMUNION

Rev Barry Wilson

11.00am CONNECTIONS

SUNDAY 14th

9.15am MORNING WORSHIP

Barrie / Roger

11.00am CONNECTIONS

SUNDAY 21st

9.15am HOLY COMMUNION

Rev David Nicol

11.00am CONNECTIONS

SUNDAY 28th

9.15am MORNING WORSHIP

Barrie/Roger

11.00am CONNECTIONS



CONNECTIONS

every Sunday at 11am

at St Luke's CE Academy
in the school hall.

**THIS IS A FAMILY-FRIENDLY
SERVICE**

lasting about 40 minutes
followed by games for the
children and refreshments.

AUGUST at ST CHAD'S

SUNDAY 7th

10.45am

FAMILY SERVICE

– KH and team

SUNDAY 14th

10.45am

PRAYER & PRAISE

– KH and MF

SUNDAY 21st

10.45am

HOLY COMMUNION

– Rev Barry Wilson

SUNDAY 28th

MORNING WORSHIP

– KH and MF

ST LUKE'S CHURCH OFFICE

Unless involved with funeral duties
Barrie mans the office on Mon, Wed,
Thurs and Fri from 10.00am to 1.00pm
using **07517 653370**. During these
times church is open for private prayer.

MIDWEEK SERVICES

Please note:

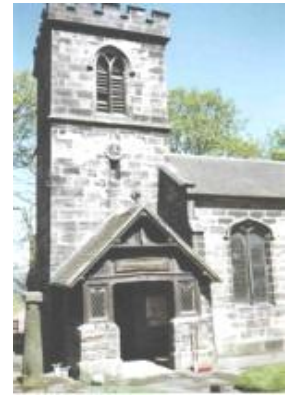
There will be no midweek services
during August. The next one will be
Wednesday September 7th at 9.15am at
the Methodist Church.

*NB Rev Eleanor is on sabbatical until mid-
September. Our thanks go to Gill Meredith
who has been deputising during this time.*

ST CHAD'S CHURCH BAGNALL

No news this month but please contact Kath Howell for further information about services.

Phone nos for St Chad's contacts are on back page.



A Smile from Barrie....

Given all that's going on currently with our politicians, with questions of "trust" and "probity" and wild promises flying around, this seems like an appropriate piece ("with apologies to Ronald Reagan!").

A Bishop and a politician are both waiting anxiously at the Gates of Heaven. St Peter has just gone through all the administrative paperwork and says to them both "Well, all appears to be in order, follow me and I'll show you to your accommodation", And so they follow him through the gates and into the residential area. St Peter stops by a chalet, just one small, pretty basic unit, simply a small bedroom and bathroom. St Peter turns to the bishop and says to him, "Please, make yourself comfortable, this is your accommodation". St Peter then turns to the politician and says, "please follow me". The politician becomes increasingly concerned as they walk down the path away from the chalets and then turn the corner on to a large gravelled drive. In front of them is a beautiful palatial mansion, with fountains playing in the garden. They walk down the drive, up the marbled stairway and up to the magnificent front door. St Peter turns to the politician and says "Here you are, this is your accommodation, I hope you'll be very comfortable." No longer able to hide his concerns, the politician turns to St Peter in amazement and says – "But surely there has to be some mistake. That holy and faithful man of God has only been given a small and very basic home, but you are giving me this wonderful mansion. Surely this can't be right?" St Peter says, "Oh but you don't understand the way it works up here – there's no mistake - you see, we get thousands of priests but you're the first politician we've ever had in."

PASTORAL TEAM

Listen up for details of the next walk. Remember to contact Shirley Brindley (01782 504089) if you know of anyone who would like a visit or phone call from a member of the pastoral team.

A date for your diary...**Thursday September 15th** at 2.00pm for AFTERNOON TEA in the chapter house. All welcome. Tickets £10 each.

The **Methodist Church** in Endon

- The Community Café is open on Mondays from mid-morning to 1.30pm.
- Every Thursday at 10.30am 'Fit-as-a-Fiddle' our gentle exercise group is open to all.
- Carers' Café is open fortnightly on Friday mornings from 10.00 – 12noon.

Next dates: 12th and 26th August.

ST LUKE'S CE ACADEMY VISITS *Sue writes...*



The Reception Class visited church on July 14th and had a great time identifying items found in a church. It was lovely to see their enthusiasm.

The Year 6 Leavers' Service took place in church on Monday 18th July. There was a full house of parents and grandparents to listen to the nominations for awards; these were by the children for their classmates. There was a lot of laughter and a few



tears. We wish them all the best for their move to high school.

FLOWER & CRAFT CLUB



We will be taking a break for August but will return on **Wednesday 14th September** from 1pm to 3pm in the Chapter House as usual. Bring your own choice of flowers for this session. Jeanette and Pauline will be demonstrating an arrangement for September. New members are always welcome and, if you'd just like a cup of tea and a chat you would be very welcome too.

CAKE STALL

St Luke's Church will be hosting a cake stall at Endon Village Hall on

Saturday 3rd September. We will need plenty of cakes to sell in aid of church funds, so please put this in your diary. Jean Brough is the contact for this event so please call her for further details on 07951 740858.



SPECIAL SERVICE

We welcomed Pauline and Jeanette to our service of celebration and thanksgiving for our Flower & Craft Club on Sunday, July 17th.

We are so grateful to them both for all their help and encouragement since the club started a few years ago. They have given inspiration and confidence to several members who began as complete novices!

SYNOD NEWS

Leek deanery synod was held at St Luke's on July 19th (yes the hottest day of the year) and despite the heat, was well attended. Ann Boulton served refreshments in the chapter house and Neil Taylor battled nobly trying to persuade the DVD projector to work. Guest speaker Bishop Gideon had flown in from his diocese in Kenya for the Lambeth Conference and was being hosted by Biddulph St Lawrence Church. He shared various facts and figures with us and some of the problems he has which are rather different to ours such as witchcraft. His congregation numbers between 80 and 100 each Sunday.

Rural Dean and Patron of St Luke's Rev Nigel Irons updated us on the somewhat slow progress being made towards the appointment of new incumbents. He thanked Barrie for putting St Chad's patron in touch with St Chad's which thus sorted something of a logjam. He encouraged us to build good relations with the parishes within our benefices which in our case will now include Horton. Parish profiles and mission action plans will need updating.

Social Prescribing

Rev Nigel also made us aware of an NHS plan to introduce "Social Prescribing". The NHS is looking for social groups for people in need of psychological and emotional support such as the bereaved. If a church has such a group Nigel would be pleased to hear about it. John Gibson of St Lawrence's, Biddulph told us about his group **Biddulph Revs** which is for "petrol heads" like himself and encourages blokes to meet and engage in matters of old cars. I think our Flower & Craft Club would qualify for this too and the Carers' Café at the Methodist Church.

Barrie adds...

UPDATE FROM ARCHDEACON MEGAN ON LEEK DEANERY PLAN

There has been a delay in progress waiting for Patrons to give agreement. However, this has now all been sorted (thanks to the active intervention of Barrie Jackson at Endon).

We have started the initial consultation process for Milton, Norton and Brown Edge. The closing date for responses is 29th July. Now that we have support from all patrons we can start the process for the remainder of the deanery, which we are going to put through as a single scheme.

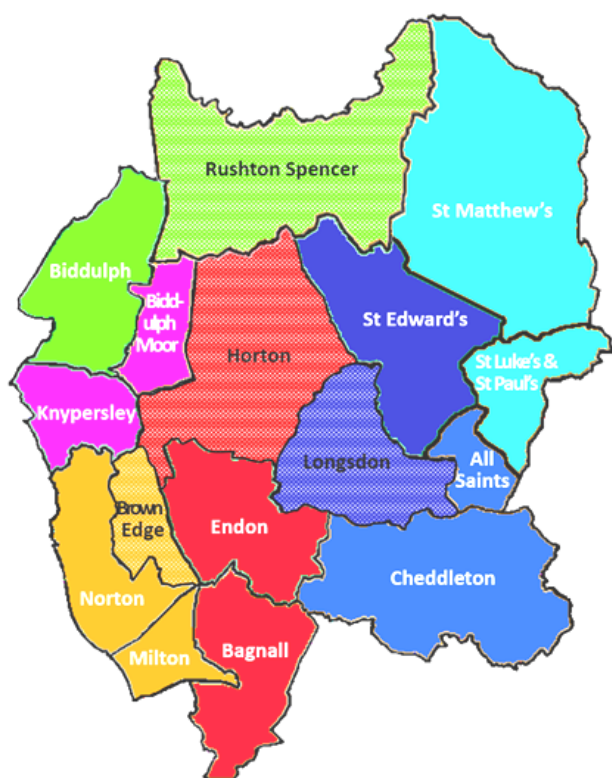
I hope to start talking to PCCs in vacancy during the summer to help them start work on parish profiles. Whilst these can't yet formally be written I am hoping PCCs will be able to get most of the work done so that when the re-organisation does go through the vacant posts are ready to go to advert. This will involve some work on Mission Action Planning, as well as encouraging PCCs in potential new benefices to start building relationships with each other.

I'm also having ongoing discussions with the property department to find suitable housing between All Saints and Cheddleton for the new Team Vicar there.

I haven't yet done any further work on the shape of ministry in the 'shaded parishes', other than having a very useful discussion with Longsdon PCC. Again, I hope to do some work on this over the summer. (*Brown Edge, Horton, Longsdon and Rushton Spencer)*

Members of the Bishop's Council have agreed a package of arrears write-offs for both Longsdon and Cheddleton, which should help them developing a missional future in the new structure.

A Reminder of the Proposals for the Deanery:



LEEK DEANERY VISION

January 2022

Approximate deployment across the 5 Benefices:

<i>Biddulph 0.85 + Rushton Spencer 0.15</i>	1.00
<i>Knypersley 0.67 + Biddulph Moor 0.33</i>	1.00
<i>Norton 0.40 + Milton 0.45 + Brown Edge 0.15</i>	1.00
<i>Endon 0.50 + Bagnall 0.30 + Horton 0.15</i>	0.95
<i>St Edward's 0.85 + Longsdon 0.15</i>	1.00
<i>St Matthew's 0.20 + St Luke's & St Paul's 0.80</i>	1.00
<i>All Saints 0.50 + Cheddleton 0.50</i>	1.00

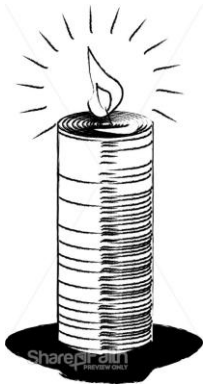
On July 24th we were thrilled to welcome back Roger and Sheila from an enforced absence due to Roger's illness.

Roger writes...

On June 12th, I thought that we would be away for just one Sunday. Little did we think that it would be six weeks before I set foot in St Luke's again. It's great to be back, complete with pacemaker and a replacement valve, feeling better than I have done for ages. I even have a box of electronics by my bed which, in the wee small hours, tells the hospital how I'm doing.

I continue to be surprised that anyone should think that I was worth spending such a lot of money on, and amazed that the Lord thinks so too. The question, "Why are you keeping me alive?" has taken on a new sharpness.

Perhaps you've seen on the telly scenes from a big outdoor music festival, where an intrepid lad or lass lies on top of the crowd, held aloft and propelled forwards by a forest of uplifted hands. I've never done that, and I never will, but over the last month I have found out what it feels like. Thank you all for your support.



CANDLE DEDICATIONS for AUGUST

For £2.50 you can keep the Candle of Hope or the Sanctuary Light burning for a week with a dedication.

Please contact Shirley Brindley on 504089 as soon as possible if you would like a particular date.

Aug	CANDLE OF HOPE	SANCTUARY LIGHT
7 th	Sue Gibbons to celebrate Dan's birthday Anon in memory of Muriel and Graham Salt	Chris Morgan in loving memory of her Mum and Dad on their birthdays (5 th and 6 th)
14 th	Sheila and Stan to celebrate the birthday of their son-in-law, Phil (15 th)	David Moss and Janet Bowyer in loving memory of Helen and Edgar Bailey, grandparents of Janet, David and Robert
21 st	Tony Machin in loving memory of a very special wife and mother	The candle is kept burning by June and Peter Pope
28 th	Tony Machin in loving memory of a dear Mum and Dad	The candle is kept burning by Marilyn Plant



Happy Birthday!

AUGUST GREETINGS to

Caroline Barker (2nd), Margaret Woolliscroft (11th), Rachel Foster (13th), Sylvia Bradshaw (16th)

If you would like your own or a family birthday included here please contact Ros 504137

Barrie's response to 'Lichfield-on-See' (see notice page 11)

"On the assumption that this was not intended for publication on April Fool's Day, we obviously have to take this as the way we are intended to take our mission forward.

Perhaps we should be thankful that our Cathedral has not erected a helter-skelter in the chancel or a pitch-and-putt course in the nave (as some already have!)

It brings new meaning to the designation 'Festival Churches'.

Oh well, I'm just off to check on the cost of hiring half a dozen donkeys - we can't be outdone!"



Come follow Christ in the footsteps of St Chad

CHURCH ON SIGHT

Most of us own a mobile phone and many of us have an active online life – whether ordering the supermarket shop, catching up with friends on Facebook or chatting on Zoom with family on the other side of the world. The last two years, where we were not able to physically socialise for long periods of time, have sped up the growth of our online lives, out of necessity as much as desire.

But it seems that most people still long for off-line, in-person or ‘real’ face-to-face connection. Whether meeting friends down the pub, having a holiday with extended family, going to a football match or concert or just walking and chatting with our loved ones – these are things we don’t take for granted as much as we did before March 2020. And it seems that trend has also extended to churchgoing. During lockdown, many churches big and small had a crash (often an apt word!) course in the online streaming of services, beaming sermons or Communion services onto laptops and tablets in parishioners’ homes. Cathedrals especially found a new online audience – often worldwide – on Youtube as people craved a routine connection with something meaningful. Even now, Lichfield Cathedral has a regular online attendance of 80+ in daily Morning Prayer compared to a regular 4-6 pre-pandemic in person the cathedral. Online services were particularly beneficial for those who due to accessibility issues or illness were unable to get to church on a Sunday morning.

But now that restrictions have been lifted, it seems that people in our communities are still craving physical worship gatherings. This is backed up by a new report which took a snapshot of Easter Day attendance in churches across four dioceses – including the Diocese of Lichfield which covers this area. The report showed that on-site churchgoing recovered to three-quarters of pre-pandemic levels by Easter 2022. And, in our diocese, when you add in online worship the overall attendance figure was roughly the same as the on-site figure in 2019.

This early research suggests the future of the church is not purely a digital one and that meeting face-to-face is still important and desired, especially in churches with smaller congregations. It also shows a hybrid future where demand for online engagement will continue alongside the need for physical gatherings. This means things may look a bit messier than previously but also highlights that the Church, with its ancient foundations, is able to adapt, even when under the pressures of a pandemic.

Of course, the Church has a wider role than just gathering people online or on-site on a Sunday. Increasingly, as we move beyond the summer, churches will have a crucial part to play in keeping people fed and warm through foodbanks, community pantries, Places of



Welcome sessions and other initiatives during an escalating cost-of-living crisis. It's all part of sharing the love of Jesus.

Why not visit your local church's Facebook page, website or achurchnearyou.com page to find out what it has to offer – beyond both its digital and physical doorsteps?

Pete Bate is Lichfield Diocese's Director of Communications and oversees the diocese's various online presences:
website – www.lichfield.anglican.org

Facebook group - facebook.com/groups/DioceseOfLichfield/ and
Facebook page - facebook.com/LichfieldCofE;

Twitter - twitter.com/Lichfield_CofE and

Instagram - instagram.com/lichfielddiocese/ profiles.

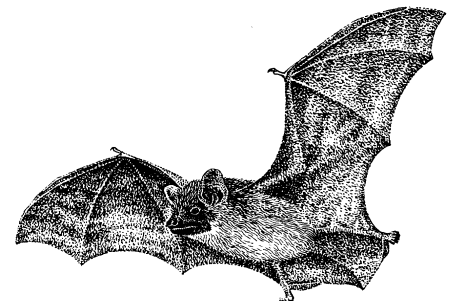
Lichfield Cathedral's online services can be found at
facebook.com/LichfieldCathedralDailyWorship



Bats that aren't in the Belfry!

Bats have been found in churchyards for a very long time, often roosting in trees or buildings. A bat roost may be nearly as old as the building with around 60% of pre-16th century

churches containing bat roosts. There are seventeen species of bat native to the UK: eight of these use churches or chapels for roosting, including some of the less common species such as the Natterer's bat and the Serotine bat. Some of the remaining nine species roost in large trees.



Bats do not roost in the belfry ... too much noise! They usually use different roosts through the seasons. Bats need nursery roosts for the young, winter roosts to hibernate and also temporary roosts to digest their food and to sleep in during the daytime. They like to roost in clean, draught free, quiet crevices where the temperature is constant.

Within churches or chapels bats are found in the eaves, porch, under roof tiles, in old timber joints, behind ceilings, hangings and commemorative plaques. They also roost within chest tombs, in holes or cracks within a wall, behind ivy or in lychgates. When roosting in trees they use holes, crevices, flaking bark and gaps behind ivy. Veteran trees are full of possible roosting places.

Churchyards tend to have a mixture of large trees, grassland, flowers, areas of long or tussocky grass, compost heaps, log piles and stonework. They are generally relatively free of chemicals, tend to have some areas which are not too tidy and may have been there a long time. All of this leads to a good population of insects which is food for the hungry bats.

Why not have a quiet sit in the churchyard at the end of the day, look to see if any swifts are swirling around the churchyard and then wait to see if any bats appear. Bats can fly long distances to forage for food so, even if you don't have roosting bats in your churchyard they may well come visiting.

All the best, Harriet Carty

Diocesan Churchyard Environmental Advisor, harriet@cpga.org.uk,

www.caringforgodsacre.org.uk - individuals and groups in the diocese receive 20% members discount on all CfGA materials. Use the discount code **diomem22**

‘LICHFIELD-on-SEE’ !!



No, it's not April 1st.

This is See-rious....

From July 22nd Lichfield Cathedral is bringing the seaside to the city this summer by creating a sand beach in front of the cathedral.

As part of Cathedral's summer

activities, Lichfield residents will be able to grab deckchairs, snacks, and drinks and relax on the city beach.

Beach toys and games will be available. A varied programme of daily beach-inspired activities will also run throughout the school summer holidays.

The Dean of Lichfield, Very Rev Adrian Dorber said: "As Britain's most landlocked Cathedral, we want to bring an unfamiliar landscape to Lichfield – a beach on the West Front. We know there's something wonderful about having your feet on the beach. It's deeply relaxing just to have the time to sit in a deckchair and feel the sun on your face. "Our invitation is to come to a sacred place but come and relax and be playful. The Beach will be open daily and is absolutely free as we know the cost of living crisis is hitting many families hard," he added. The Cathedral will also have an eight-metre climbing wall on certain dates. The Beach will be open throughout summer until 31st August. (See p 8 for Barrie's comment.)

ADRIAN KNAPPER

POWERED BY
exp UK

**Find Out What Your
Home is Worth ?**

FREE

Online Property Valuation

<https://adrianknapper.exp.uk.com>



Adrian Knapper
Estate Agent



07419 21 28 27

Advertising Scale of Charges

¼ page: £5 per month
or £50 for 12 months

½ page: £10 per month
or £100 for 12 months

1 page: £20 per month
or £200 for 12 months

If you would like to place an
advertisement

please contact Ros
on 01782 504137

or e-mail:

jandrbenson@btinternet.com

LEEK FOOD BANK UPDATE

PLEASE REMEMBER THE FOOD BANK.

THIS LIST IS TAKEN FROM THE CURRENT WEB PAGE:

- JAM
- CUSTARD
- UHT MILK CARTONS
- INSTANT MASH POTATO
- TINNED POTATOES
- SHAMPOO
- CHOC BARS
- FRUIT SQUASH
- WASHING POWDER
- HAIR CONDITIONER
- SPONGE PUDDINGS



- TEABAGS - SMALL BOXES
- COFFEE - SMALL JARS
- KITCHEN, BATHROOM AND
MULTI-SURFACE CLEANER
- CLEANING CLOTHS
- SHOWER GEL
- TOMATO KETCHUP AND
BROWN SAUCE

THANK YOU!

August Prayer Focus

- **Political leadership in the UK**
- **Those coping with severe weather conditions here and in other parts of the world due to climate change**
- **Sri Lanka**
- **Those affected by the severe earthquake in Afghanistan and aid organisations striving to get aid to those in desperate need**
- **East African countries on the verge of famine as a result of the war in Ukraine which has created an acute grain shortage**
- **The problem of people-trafficking across the Channel and those seeking asylum**
- **The recent alert for polio vaccines to be given to younger children**
- **The threat of monkeypox and those currently affected**
- **The Russian invasion of Ukraine and the threat to world peace**
- **The plight of the millions of Ukrainian refugees**
- **Those taken prisoner by the Russians**
- **Those taking refugees into their homes in the UK and Europe**
- **An end to the war**
- All hostages still in Iran awaiting release especially Morad Tahbaz and Mehran Raoff
- The release of Roman Protasevich in police detention in Minsk, Belarus
- Co-operation of worldwide governments to combat climate change
- The plight of the many refugees making the dangerous Channel crossing in flimsy boats and what happens to them when they land on our shores
- The prospect of rocketing energy prices and those fearful of being unable to pay their bills this winter
- The challenge of those unwilling to be vaccinated against COVID
- Citizens of poorer countries who have not yet had a COVID vaccine
- All medical staff worldwide battling COVID
- Our politicians as they make decisions which affect us all
- Improved safety for women on our streets
- Our police force and the challenges they face
- UK businesses and trade problems following the Brexit deals esp in N Ireland
- The huge problem of loneliness
- Refugees everywhere especially in Yemen and the US border with Mexico
- All suffering at the hands of deeply corrupt governments
- Loved ones in our parish who are currently unwell
- Our church wardens and worship leaders during the interregnum
- Bishop Matthew and the appointment of our next incumbent
- The Church of England dealing with a shortage of clergy and funds
- Yemen – the on-going crisis and those trying hard to get aid into the country
- Those affected by the recent upsurge in knife crime
- The widespread drug problem especially in Stoke-on-Trent
- Lou Macari's hostel for the homeless in Hanley
- The problem of the millions of plastic bottles afloat in our oceans and the tons of 'space junk' orbiting our planet
- All who have lost loved ones recently
- The Trussell Trust food banks still needed as much as ever
- All children in danger of going hungry

Roger Simpson, St Luke's warden / worship leader / PCC chair	01782 502006
Barrie Jackson, reader / St Luke's PCC Sec / Administrator (* tel no for church enquiries)	07510 074097 07517 653370*
Sue Forrester, Flower & Craft Club / Foundation gov / Safeguarding Officer / St Luke's Facebook	07854 043187
Deb Podmore, worship leader / Connections / school chaplain	01782 773383
Neil Taylor, worship leader / Connections	07961 652104
Sheila Simpson, St Luke's Electoral Roll Officer	01782 502006
June Pope, St Luke's warden's team	01782 503269
Shirley Brindley, candle dedications / pastoral tm	01782 504089
Steve Dale, St Luke's treasurer	07894 098011
Sheila Hurst, St Luke's Gift Aid Sec / MU rep	01782 503622
James Benson, reader emeritus	01782 504137
Ros Benson, newsletter / St Luke's website	01782 504137
St Luke's vestry (church office)	01782 502166
Kath Howell, St Chad's PCC chair / warden / worship leader / safeguarding officer	01782 304616
Julia Podmore, St Chad's warden / treasurer	07980 802121
Pat Saul, St Chad's PCC vice-chair / secretary	07973 863930
Muriel Finney, St Chad's worship leader	01782 302229
Peter Millard, St Chad's buildings / warden's team	01782 505338
Emma Ashworth, St Chad's warden's team	07861 730806
Sheila Tipper, St Chad's news contact	01782 534647

For the duration of the interregnum the newsletter is available on-line as a PDF attachment and on the church website.

Paper copies are available for those without internet access.

Please contact Barrie if you would like a paper copy or know someone who would. Please submit notices for our next newsletter to Ros Benson by **Tuesday, August 23rd.**

either by e-mail jandrbenson@btinternet.com or phone 504137.



Enjoy the rest of the summer folks whether you are off to faraway climes or sitting in your back garden with the odd 'day out' thrown in or even going to Lichfield-on-See! As someone said, "We may have free time but there's nothing 'free' about it. We have no trouble meeting expenses....they're everywhere!!"