



THE UNITED BENEFICE of ST LUKE'S, ENDON with ST CHAD'S, BAGNALL

Encounter, Encourage, Enable ... Committed to Sharing God's Love

www.endonstlukes.org.uk

Vestry (church office): 01782 502166 or 07517 653370



August 2023

INTERREGNUM Month 38



*Never been to
Connections?
Pop down to the school at
11am on any of these
Sundays.*



**LOTS HAPPENING
– don't miss out!**

**30th July - 11.15am
CHURCH PRAYER MEETING....
All welcome!**

'If My people who are called by My name will humble themselves, and pray and seek My face, and turn from their wicked ways, then I will hear from heaven, and will forgive their sin and heal their land.' 2 CHRONICLES 7:14 (NKJV)

**6th August - 11am
CAFÉ CHURCH**

**13th August - 11.30am
CHURCH PICNIC**

All welcome. Bring your own picnic. Tea/Coffee/Soft drinks provided.
Feel free to invite friends and family. If it's raining, we'll have our picnic in the school hall.

**20th August - 11am
MOVIE MORNING**

**27th August - 11am
CAFÉ CHURCH**

AUGUST at ST LUKE'S

6th SUNDAY

**9.15am HOLY COMMUNION –
Rev Philip**

11.00am CONNECTIONS

13th SUNDAY

**9.15am MORNING WORSHIP –
Roger**

11.00am CONNECTIONS

20th SUNDAY

**9.15am HOLY COMMUNION –
Fr David Nicol**

11.00am CONNECTIONS

27th SUNDAY

**9.15am MORNING WORSHIP –
Barrie / Roger**

11.00am CONNECTIONS



Sunday at 11am
at St Luke's CE Academy,
Leek Road in the school hall.

THIS IS A FAMILY-FRIENDLY SERVICE

lasting about 40 minutes followed
by games for the children and
refreshments. See front page for
summer programme.

AUGUST at ST CHAD'S

6th SUNDAY

10.45am FAMILY SERVICE - KH w team

13th SUNDAY

10.45am PRAYER & PRAISE – KH / MF

20th SUNDAY

10.45am HOLY COMMUNION – Rev BW

27th SUNDAY

10.45am MORNING PRAYER - MF / KH

Goodbye Rev Barry and Thank you!

During our interregnum we have been privileged to have Rev Barry Wilson preside at our communion services here at St Luke's. He is attached to St Luke's in Leek which is soon losing its vicar. Sadly for us Rev Barry will be required to help out there so we shall no longer see him on our first Sundays. We ask the Lord to bless him in this extra role.

ST LUKE'S CHURCH OFFICE

Unless involved with funeral duties
Barrie mans the office on Mon, Wed,
and Fri from 10.30am to 1.00pm using
07517 653370. During these times the
church is open for private prayer.

ECUMENICAL MIDWEEK SERVICES on WEDNESDAYS

Holy Communion at 9.15am

Aug 2nd at Methodist Church

Aug 9th at St Luke's

Aug 16th at Methodist Church

Aug 23rd at St Luke's

PASTORAL TEAM

- **HILLSWOOD LODGE CARE HOME**

Although there is limited space in the lounge area volunteers are welcome to help boost the singing. There is room for 6 or 7 of us. **The next date is Wednesday August 16th at 11.00am.** Please inform Shirley or Rev Patricia if you are able to come. The residents really do enjoy these services and the chats afterwards.

- **WALKS followed by COFFEE / LUNCH**

Members of the pastoral team also arrange short walks followed by either coffee or a light lunch at a café. Listen out for details of the next walk.

The Methodist Church



- **Every Sunday** 10am Worship
- **Monday** 10am – 1.30 Community Café (not bank holidays)
- **Wednesday** 9.15 Holy Communion
Alternately with St Luke's Parish Church
- **Thursday** 10.30 Fit-as-a-fiddle
Exercise, conversation and coffee
- **Thursday** August 17th 2pm – 3.30pm Bereavement Café
- **Fridays** August 11th & 25th 10am – noon Carers' Café
- **Friday** 6pm 'Blast' – youth club for 7-11 year olds (during term time)



SQUARES UPDATE

Thank you to those who keep up the flow of knitted squares. They are still much needed and appreciated. When a large batch of squares has been sorted at Biddulph Methodist Church, they are sewn together as blankets. They are then blessed at a special service, loaded into Sue and Norman's car boot and delivered personally by them to the women's refuge in Calais. The picture shows a blanket made from squares supplied by Endon and district ladies. ***Please note it is still enormously helpful if squares are sewn together in groups of six.***



CANDLE DEDICATIONS

for AUGUST

For £2.50 you can keep the Candle of Hope or the Sanctuary Light burning for a week with a dedication. **Please contact Shirley Brindley on 504089 if you would like a particular date.**

Aug	CANDLE OF HOPE	SANCTUARY LIGHT
6 th	Anon in memory of Muriel and Graham Salt	Chris Morgan in loving memory of her Mum and Dad on their birthdays (5 th and 6 th)
13 th	Sheila and Stan to celebrate the birthday of their son in law, Phil	David Moss and Janet Bowyer in loving memory of Ellen and Edgar Bailey, grandparents of Janet, David and Robert
20 th	Sue Forrester to celebrate Dan's birthday	Tony Machin in loving memory of a very special wife and mother
27 th	Tony Machin in loving memory of a dear dad and mum	The candle is kept burning by Marilyn Plant



AUGUST GREETINGS to

Caroline Bradshaw (2nd), Margaret Woolliscroft (11th),
Rachel Foster (13th), Sylvia Bradshaw (16th)

If you would like your own or a family birthday included here please contact Ros 504137

Mothers' UNION
Christian care for families

Thanks to MU members who wrote Christmas cards for prisoners. We exceeded the challenge of each group providing 50 cards.

Sheila H

NEW LIGHTING - good news

Hopefully you will have noticed a big improvement recently in the lighting in church. Thanks to Barrie, Roger and a generous legacy from Gladys Eglite, new LED lights have now been fitted. Not only do they provide us with better lighting but they also run at one fifth of the cost of our previous lighting system and will last much longer. Gladys specifically asked that we use it for improvements to the facilities of St Luke's Church. She was one of the founder members of Bagnall Heights Christian Fellowship and she used to attend the Communion at St Luke's when St Chad's came to us.



DIOCESE OF
LICHFIELD



Come follow Christ in the footsteps of St Chad

CHIPPING AWAY AT IT

I recently went to the cinema with two of my children to watch the new Spiderman film. As we picked up our tickets they asked if we could have some popcorn and I said yes. This was not entirely selfless because I love a bit of popcorn myself, but as I shelled out for two huge buckets of popcorn I did wonder if I'd overestimated our appetites!

We entered the theatre, found our seats, and started to chomp away while we waited for the film to start. After we'd sat through half an hour of adverts for new cars, trailers for new films, and then more adverts for new cars masquerading as trailers for new films, we'd barely made a dent on the mountain of popcorn before us.

I often feel like the Net Zero targets that the Church of England, like many other organisations, councils, and governments, has set, are a bit like that pot of popcorn. We start off with an almost overwhelmingly big pot full of all the carbon emissions from our churches, schools, vicarages, cathedrals and offices, not to mention glebe land, investments, and theological colleges. It seems impossible that we might get our collective emissions down to net zero by 2030.

But if we just focus on the end goal we'll easily get disheartened – it's an important target but it's also a huge challenge. Instead what we should do is just keep chipping away at it in the ways that we can in the places where we are. Get your PCC to switch to a green energy supplier. Look at what drafts you can block up in your church building. Swap your lights to LEDs. Cut the grass in your Churchyard a little longer. Think about where you hold meetings in the colder months. Switch to an ethical bank. Plant some trees.

All of these simple things can make a huge difference to the carbon footprint of most Churches, and many of them will also help reduce your energy bills which will make all our wonderful hardworking Church treasurers happy too! Some Churches will be able to go further now and look at things like solar panels, insulation, EV charging points, bicycle racks, etc., but for some churches the simple things might be all that you can do at the moment and that's ok.

There are lots of people working to find solutions to the harder problems around reducing our carbon emissions, and we have come a long way already. Let's keep chipping away at the pot, doing the things that we can, and we might just surprise ourselves with how much progress we can make.

And as for the popcorn? Well you'll perhaps be shocked to find out that over the course of a two and a bit hour long film the three of us managed to chip away at the huge buckets of popcorn until we reached Net Zero!

Revd Rich Clarkson is the diocesan environmental officer.

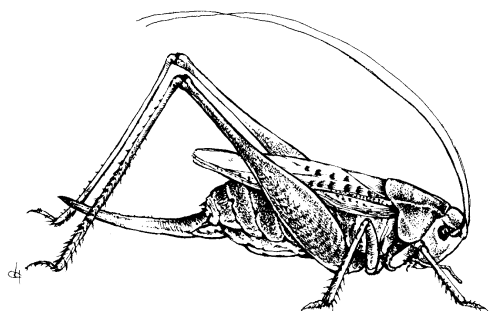
There are lots of ideas, resources and case studies for Churches at the CofE Net Zero Church webpage - churchofengland.org/resources/churchcare/net-zero-carbon-church



Hopping with Life

Why not have a search for grasshoppers and bush-crickets in your local churchyard. Churchyards can be real havens for them as they contain a range of different habitats which may suit different species. Some are found in long or tussocky grass, some scrub and hedgerows, and some in the canopy of trees. Some burial grounds can have more than 3 grasshoppers per square foot!

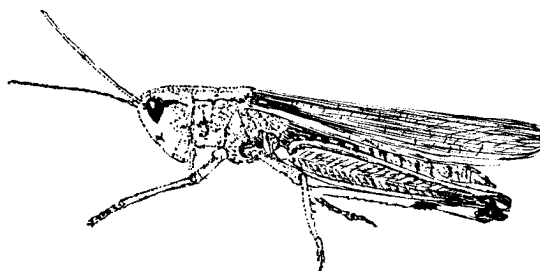
The easiest way to identify grasshoppers from bush-crickets is to look at their antennae. Grasshoppers have shorter, thicker antennae compared to the antennae of crickets which



are long and thin, almost hairlike. Another difference is in their habits, grasshoppers are herbivores, feeding mainly on grass as their name suggests, whilst bush-crickets eat a range of foods including aphids and small caterpillars as well as plant material.

These insects have been around on the earth for a long time, they are found in the fossil record of the early Triassic, about 250 million years ago, making them the most ancient group of herbivorous, chewing insects that are still living.

Grasshoppers and crickets are tasty prey items to many larger creatures such as birds, mammals, spiders and amphibians so they have good senses to help them escape this fate. They have large, compound eyes on the sides of their heads, giving a wide field of vision, ears on either side of their abdomens and of course the antennae to sense touch. If under threat they will jump astounding distances, up to 80cm, equivalent to a human jumping the length of a football pitch.



Have a look for grasshoppers within the long and tussocky grass of your churchyard or shake a tree or shrub branch over something white like a bedsheet or plastic tray to see if any bush-crickets fall down. Showing these special creatures to children opens up a world of delight and interest.

All the best, Harriet Carty

Diocesan Churchyard Environmental Advisor,

harriet@cfga.org.uk,

www.caringforgodsacre.org.uk - individuals and groups in the diocese receive 20% members discount on all CfGA materials. Use the discount code **diomem22**



Lindsey writes...

We have now passed the longest day and are rapidly approaching the start of the school holidays. We wait to see what impact the holidays will have upon Food bank usage. June figures show that activity stepped up once again and was significantly higher than for the same month last year – figures shown in brackets for 2022. I think it feels even busier than the increased numbers indicate because of the huge complexity of our clients and the issues that they are facing. The figures for last month are as follows:-

Total vouchers fulfilled	= 120 (82)
No. of Adults fed	= 177 (114)
No. of Children fed	= 91 (90)
Total no. fed	= 268 (204)

I have also looked at the amount of donations received last month compared with the same time last year, as we have relied heavily on purchased items throughout June this year to enable us to meet the demand for food. Interestingly, although the donations feel much lower, they are actually higher! This misconception is caused purely because they last for a lot less time than they did. In June 2022 we received 2603kg in donations and last month we received 2778kg. The difference is in the distributionin June 2022 we gave out 2887kg of food, whereas last month we gave out 3343kg, a shortfall of more than 500kg, hence our need to purchase a large amount of stock.

The Trussell Trust do place a nominal value on food distributed. Currently this is £2.37 per kg, having risen from £1.75 per kg in September 2022, which was the first increase since 2017. This figure therefore is perhaps not truly representative of what it is costing us and our donors to maintain sufficient stocks, bearing in mind the way in which prices have soared. Applying the £2.37 figure, the food we distributed to clients in June 2023 cost just under £8000, 25% of which was covered by food purchased. Although this sounds very worrying, we are very blessed with financial donations from our supporters and I am confident that this expenditure is manageable, but is obviously something that we are keeping a very close eye on.

The Trussell Trust nationally are about to launch an advertising campaign to encourage donations, and I'm slightly embarrassed to say that, as part of this campaign, my face may appear in your newspaper or in flyers delivered to your houses. I can only apologise! Seriously though, they are doing this so that they can offer more financial support to individual Foodbanks, specifically because of the need to purchase food.

On 22nd June, I attended the Foxlowe Arts Centre, along with a group of volunteers, to see a production called "The Hunger", which is a theatrical exploration of Roger Elkin's cycle of poems concerning the great Irish famine. It was truly amazing and incredibly moving. The Northern International Theatre company are hoping to take it on tour, and I really would recommend going to see it if you get the chance. We had been invited to attend in order to collect donations, but we were delighted to discover that all the money from selling programmes was also coming our way, and we received £105.00 in total. So, a lovely evening out and a substantial donation, can't be bad!

Our second Sainsbury's food drive day was held on Saturday, 1st July, and thanks to the tireless efforts of our volunteers, and the amazing generosity of the people of Leek, we received £40.00 cash donations and 213kg of food. This really is proving to be an excellent way of not only attracting donations, but also of highlighting the work that we are doing to people who perhaps were not aware of us previously. The third scheduled date is towards the end of this month, but I am sure that I will be repeating this exercise in the future.

Our voucher scheme for Ash's Butchers seems to be going from strength to strength. It is so good for us to be able to offer our clients the wherewithal to get some fresh meat and they really are incredibly grateful. Alongside this, the fresh produce has started to arrive from our green fingered volunteers and the allotment holders in Leek, so yet more variety to offer our clients. I am still celebrating the success of growing my first ever cucumber but hope to be able to contribute in the not too distant future!

During June, eight of our volunteers and one of the Trustees attended an online benefits training session. This was provided by Citizens Advice, and was a joint session for us and volunteers and Trustees from Cheadle Foodbank. It really was very interesting, and summed up by this comment from one of our volunteers after the session – "what a confusing system, no wonder folk aren't claiming!"

Pension Credit is the most unclaimed benefit. There is currently an estimated £1.7 billion unclaimed, with the number of households not claiming estimated to be 850,000. Words fail me! My next mission is to meet with the Department of Work and Pensions to ask why exactly the system is so confusing and difficult to navigate, and whether there is any scope for it to become less so. This meeting is taking place in the first week of August, by which time I will have a very long list of some of the ridiculous hoop-jumping scenarios we are seeing on a daily basis.

At the end of the month, we started a new drop-in session, this time from members of the social prescribing team attached to the GP practices in Leek. They will be attending every Friday during July to see if this is something that our clients find useful. Judging by the first session, I think our clients are going to find it invaluable. For those of you who aren't aware of social prescribing as a concept, please follow this link to the National Academy for Social Prescribing to find out what an amazing resource this is:

<https://socialprescribingacademy.org.uk/what-is-social-prescribing/>

Through my background as a Manager in General Practice, I became only too aware during my 30 year career how time constraints made it impossible for the doctors and nurses to focus on anything other than the clinical wellbeing of patients, even though there were numerous other factors which impacted on their overall wellbeing. This is where the Social Prescribers come in. I have worked closely with them since I took over this role, as they are one of our referral agents and have a number of clients who have needed our help. The support they give is beyond measure and I'm delighted that they now have a presence at the Foodbank.

Our shopping list remains the same, with everything in pretty short supply, so any donations will be very gratefully received, thank you. We have now added pasta to the list, which is the first time in my 5 years at the Foodbank that this has happened.

Longlife semi-skimmed milk	Fruit squash	Cereals
Pasta sauce	Sponge puddings	Tinned tomatoes
Tinned vegetables	Tinned rice pudding	Coffee
Instant mash	Rice	Tinned meat
Tinned potatoes	Tinned fish	Tinned fruit
Tinned soup	Custard	Biscuits/snack bars
Ketchup/brown sauce	Pasta	

Household cleaning products:

Washing up liquid
Multi surface cleaner
Cleaning cloths/sponges
Laundry liquid/capsules/powder

Toiletries:

Shampoo and conditioner
Shower gel and soap
Toothpaste and toothbrushes
Deodorant
Razors and shaving foam

Babies:

Nappies – all sizes PARTICULARLY NEED SIZE 2 AT THE MOMENT
Nappy bags
Wet wipes
Baby shampoo and bath lotion
Cotton wool
Talcum powder

If you are a donor, please try to deliver your donations at the Foodbank on Tues and Fri between 10.00 am and 12 noon – as it gets very busy with clients after this time. Alternatively, you may use any of our Permanent Collection Points which are still available at various locations listed on our website <https://leekdistrict.foodbank.org.uk/give-help/donate-food/>. We are also able to collect any large donations - please contact the Foodbank to arrange this.

If any of you would like to discuss anything relating to the Foodbank or arrange a visit, please contact me at projectmanager@leekdistrict.foodbank.org.uk or on 07916 005064. We continue to welcome corporate volunteers, school groups and individual volunteers, and we are always very happy to show people around and share with them the work we are doing. Love, best wishes and blessings to you all.

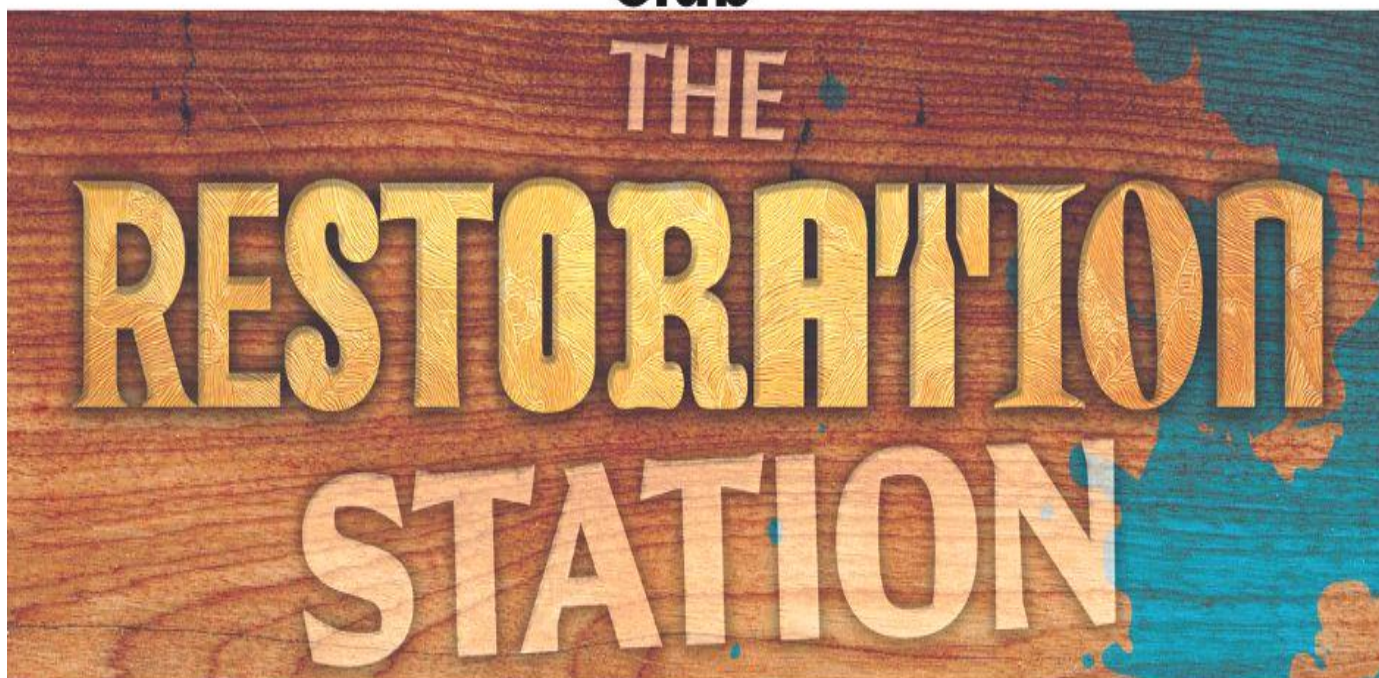
Lindsey Stockton, Project Manager

***NEXT COLLECTION at St Luke's and Connections
Sunday August 7th (June collection 71kg)***

Fun for the summer hols!

Please pass on the word to any young families you know in Endon....

Endon Methodist Church Summer Holiday Club



**1st, 2nd & 3rd August 10am -12 noon
For ages 5-11**

Join us for games, crafts, stories & more!

To book a place contact

Office: 01538 752046

Email:

kidsclub@staffmoorlandsmethodists.org.uk

Flower Arranging Demonstration at St Chad's

Sheila Tipper writes...

Considering all the horrible wet weather we've had recently, Wednesday evening was warm, sunny and bright. 26 of us were entertained by Maggie with some gorgeous flower arrangements, some very entertaining stories about various trips that she and Muriel F. had taken (including the many scrapes they got into) and tips on how to care for our flowers.

Once the demonstration was over we all enjoyed our tea/coffee and scones and a chance to mingle and have a natter.

People must have spent ages baking the delicious scones and also some very tasty cakes (I refused, of course!) Not being a baker, I'd bought my donation of scones from Sainsbury's!!!



All the arrangements that Maggie had done were then raffled. We'd each had a numbered ticket on arrival and Maggie drew them and the lucky winners claimed their choice of decoration (unfortunately one of the winners wasn't me!) I apologise that I didn't make a note of all the winners but I did persuade Ros (under duress) to have her photo taken.

We took £180.00 in ticket money. We gave Maggie £50.00 towards the flowers and so made a profit of £80.00 towards church funds. But it wasn't about the money. We had a really pleasant evening among friends from church, the

village, St Luke's and some from as far away as Belgium!

Ros adds...

Four of us arrived from St Luke's for this event and we thoroughly enjoyed our evening. As an experienced florist Maggie clearly knew her stuff and the cakes and scones which followed were a real treat too. Rarely winning anything in raffles I was astonished when my number (13!!) was called out. I was delighted to select the 'French' arrangement which I took up to St Luke's to be part of the decorations for our well dressing thank you service. (No, I didn't pretend it was my work...credit went to Maggie of course.)

St Chad's Outdoor Pet Service held on Sunday 2nd July attracted a good selection of four-legged friends...and the rain held off!



St Chad's - August Date for your diary:

Sunday 6th August—Barbecue at 12.30pm at the home of Julia and family

It takes place immediately after the church service. There will be a list in the church tower for you to sign, or alternatively give Julia or Sheila a ring or drop them an email (numbers on back of magazine) if you are planning to attend. (Julia needs to know numbers if possible for catering purposes.)

The cost will be £10 per head and you can eat as much as you can manage!
Bring along friends and family.



Our Liz

July 16th was a sad day as we bade farewell to dear Liz Bannister who has been a faithful member of St Luke's and a good friend to many of us for the last seven years since moving to Endon from Rushton. Liz has helped out in many ways which included making dozens of masks for use during the pandemic. She also got to work at well dressing time securing sponsorships for the flower festival. Often to be seen in her helmet and high-viz jacket pedalling around the village and beyond, we hope she can continue keeping fit in this way around Langley. God bless you Liz and we hope you will pay us a visit from time to time!

St Luke's Diary Dates

- Cake Stall: Saturday, September 9th from 11.00am in Endon Village Hall
- Next Flower & Craft Club: Wednesday, September 13th at 1.00pm in the chapter house
- Next PCC: Wednesday, September 13th 7.30pm in the chapter house.
- Harvest Services: Sunday, September 24th (tbc).

FLOWER FESTIVAL AND WELL DRESSING

Here is Roger Simpson's address given at our special 'Thank you' service for those who worked so hard to decorate both the wells outside and the church inside....



'Great opportunities for helping others seldom come, but small ones surround us every day.'

So wrote Sally Koch. Those are the words on the scroll surrounding the pictures on the main Endon well dressing this year. Thank you to whoever knew, or discovered that quotable quote. Thank you, too, to the patient people who pressed several thousand white petals and black

stones into the yielding clay to make that part of the display, letter by letter. Add on the pictures, and we're talking about tens of thousands.



150 years ago Georges Seurat's pointillist paintings were made up of thousands of tiny dots of paint in a few pure colours; he never mixed his paints on a palette; and yet his works show delicate variations of colour and shade. The mixing takes place in the eye. Well before Seurat,

the good people of Endon were using petals, seeds, leaves and tiny stones pressed into a substrate of clay to make pictures, continuing a unique and precious traditional art form, a symphony of colour and texture in two dimensions. Endon should be proud that it has carried on, with very few gaps, for 178 years.

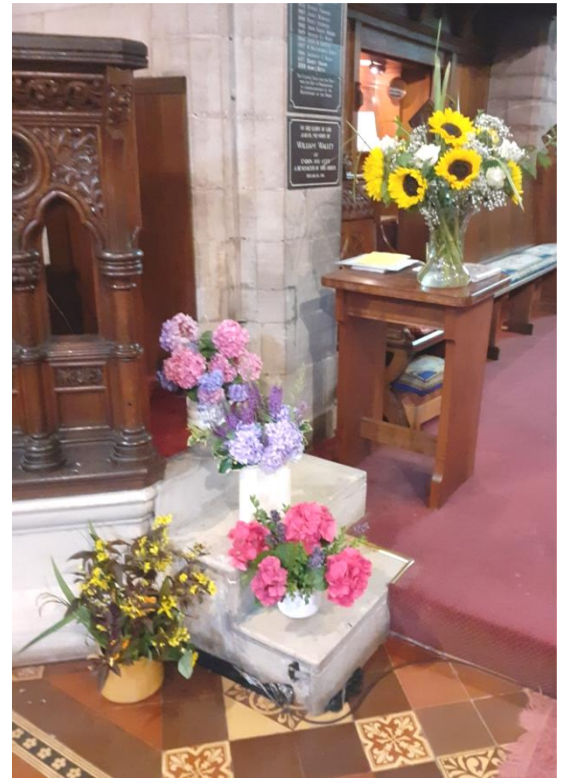
While well-dressing occupies only a short space on the calendar, the flower arranging club at St Luke's is active for most of the year. I'm impressed by the imagination and artistry which goes into their displays, and the way in which they reflect the changing seasons, or the joys and sorrows of the saints at St Luke's.



Not all the flowers are indoors. Pause half way up the steps from the car park and you will see a lovingly tended flower bed on the left. It's a good opportunity to catch your breath without actually admitting that you need to.

These floral activities are important not only in themselves but as ways of drawing people together socially.

In an age when we are awash with electronic communications, paradoxically many are facing loneliness and depression. Providing opportunities for doing things together is a great way of combatting this. As well as the activities which we celebrate today, there are men in sheds, choirs, walking groups and knit and natter sessions. For several years Sheila was a guest member of an international craft group in Brno; it worked well and friendships were formed. The risen Jesus made himself known to a couple of disciples out for an afternoon walk.



'Great opportunities for helping others seldom come....

I don't suppose I was unique in having an imaginary scene, as a boy, which I played and replayed in my head, with variations. Most of the versions involved me, dragging a twitching victim off the live rail with a dry stick, as the 9.18 to Dover thundered down the track. Well, in 80 something years that's never happened. Have you got a favourite clip in the cinema of your mind? The risk is that one can use imagined readiness for an imagined scenario as an excuse for ignoring other people's everyday problems, right in front of us.

.....but small ones surround us every day.'

I was in the Co-op yesterday. Remember the days when we were all being very careful about Covid regulations – spacing, masks, following the arrows and so on? The lady at the tills pointed out to a customer that these rules applied to us all; she was met with a torrent of abuse and an assurance that she (the customer) would complain to the management. I said that if she did, I would send them my own version of events, which was that she had been spoken to politely but firmly and the member of staff had remained calm and courteous.

Yesterday, there she was on duty at the till when I paid for our shopping. She packed it into my bag for me, with the hard and heavy at the bottom and the crisps on top. She's quietly noticed that my fingers don't work all that well. Still giving *back* – years after the initial event.

I have met someone in a hospital car park, desperate for a £1 coin, desperate to the extent of offering me a £10 note.

In case you're wondering, I politely declined the 10 quid but urged her to give a pound to the next person she found who needed it. She gave me a hug and went on her way. Giving *on* is what Alan called it. It can start a chain reaction, if God wills.

Sometimes all we have to do is to listen. There's a good reason why God gave us two ears and one mouth. We should be ready to listen to twice as much grief, as we off-load to others.

There should be grace in giving, if it's done in a spirit of true generosity, where the good of the recipient is the real motive. It ain't necessarily so. One of the meanest things I've done, one of the things of which my conscience is afraid, was to buy a large cream bun for an obese colleague.

In France you don't *give* Christmas or birthday presents; you *offer* them. Perhaps there's wisdom in that little linguistic trap.



As I'm finding out, there can be grace in receiving, too; be sure you let the giver know that they've made your world a bit better. A schoolboy, seeing Sheila with a letter in her hand, offered to post it. She was perfectly able to do this, but accepted his offer with a smile, and quite right too.

"Be joyful, keep the faith, and do the little things that you have heard and seen me do."

These are the last words of St David before he left this earth. Sounds like good advice to me.

Thank you Roger!

An Art Club...a new community initiative for St Luke's!

Sue writes....

Thank you to everyone who has shown interest in the proposed Art Club. The most popular time would seem to be a Saturday morning between 10 am and noon.

Look out for confirmation of the first date which will be in September.

Please do let your friends know – they don't have to be church members. There will be a small charge to cover tea, coffee, milk and biscuits. I'm looking forward to this new venture.

August Prayer Focus

- Those battling wildfires and searing heat in parts of southern Europe especially Greece, Italy, Spain, Turkey and the Greek Islands
- The families of the pilots killed as they bravely fought to quell the flames on the island of Evia
- Parts of Ukraine devastated by bombing and the people affected
- The serious consequences of shipments of grain being prevented from reaching their destinations, especially the African countries
- Those taken prisoner by the Russians
- An end to the war
- Recent serious concerns about the growth of Artificial Intelligence and its influence on all our lives
- Safe passage for those caught up in the current fighting in Sudan and an end to the conflict
- King Charles III and all working members of our royal family
- Safety for those attending mosques following the incident whereby an elderly man was set alight on his way home
- The recent upsurge of violence in Northern Ireland
- The current threat from China supporting Russia in the war in Ukraine
- The threat to Taiwan from China
- Those in Turkey, Afghanistan and Syria still in desperate need after devastating earthquakes
- All the aid agencies and volunteer recovery teams
- Our NHS
- Climate change and that the COP27 conference will bear fruit
- Those affected by the severe floods and landslides and those trying to help them
- Those seeking justice for women in Iran and regime change
- For those on low incomes in the light of the rise in energy bills
- Organisations striving to get aid into Afghanistan where women have been banned from working as aid workers
- East African countries on the verge of famine
- The problem of people-trafficking across the Channel and those seeking asylum
- All hostages in Iran awaiting release especially Morad Tahbaz and Mehran Raoff
- Improved safety for women on our streets
- The huge problem of loneliness
- Refugees in Yemen and the US border with Mexico
- All suffering at the hands of deeply corrupt governments
- Loved ones in our parish who are currently unwell
- Our church wardens and worship leaders during the interregnum
- The future of our benefice after 3 years of interregnum
- Those affected by the recent upsurge in knife crime
- The widespread drug problem especially in Stoke-on-Trent
- Lou Macari's hostel for the homeless in Hanley
- The problem of the millions of plastic bottles afloat in our oceans and the tons of 'space junk' orbiting our planet
- All who have lost loved ones recently
- The Trussell Trust food banks still needed as much as ever

Roger Simpson, St Luke's warden / worship / PCC chair	01782 502006
Barrie Jackson, reader / St Luke's PCC Sec / Administrator (* tel no for church enquiries)	07510 074097 07517 653370*
Rev Philip Robinson (minister w Permission to Officiate)	07983 863372
Rev Patricia Robinson (organist, also minister w PtO)	07854 418488
Revs Philip & Patricia Robinson (landline)	01782 502448
Sue Forrester, Flower & Craft Club / Foundation gov / Safeguarding Officer / St Luke's Facebook	07854 043187
Deb Podmore, Connections / school chaplain	01782 773383
Sheila Simpson, St Luke's Electoral Roll Officer	01782 502006
Shirley Brindley, candle dedications / pastoral tm	01782 504089
Steve Dale, St Luke's treasurer	07894 098011
Sheila Hurst, St Luke's Gift Aid Sec / MU rep	01782 503622
Ros Benson, newsletter / St Luke's website	01782 504137
Kath Howell, St Chad's PCC chair / warden / worship leader	01782 304616
Julia Podmore, St Chad's warden / treasurer	07980 802121
Pat Saul, St Chad's PCC vice-chair / secretary	07973 863930
Muriel Finney, St Chad's worship leader	01782 302229
Peter Millard, St Chad's buildings / warden's team	01782 505338
Emma Ashworth, St Chad's warden's team	07861 730806
Claire Houston-Brown, St Chad's Safeguarding Officer	07779 667470
Sheila Tipper, St Chad's news contact	01782 534647

For the duration of the interregnum the newsletter is available on-line as a PDF attachment and on the church website.

Paper copies are available for those without internet access.

Please submit notices for our next newsletter to Ros Benson

by **Tuesday, August 22nd 2023.**

either by e-mail jandrbenson@btinternet.com or phone 504137.



THANK YOU NEIL

The Connections team presented Neil Taylor with a selection of goodies to show appreciation for all his efforts over the last 8 years in running the service each week.

