



# THE UNITED BENEFICE of ST LUKE'S, ENDON with ST CHAD'S, BAGNALL

*Encounter, Encourage, Enable ... Committed to Sharing God's Love*

[www.endonstlukes.org.uk](http://www.endonstlukes.org.uk)

**Vestry (church office): 01782 502166 or 07517 653370**



**July 2023**

## INTERREGNUM Month 37



**THURSDAY JUNE 15<sup>th</sup>** proved a beautiful day for a pastoral team walk,  
ably led by Carol Mack!

The group of walkers saw goslings, ravens and lovely flowers along the Caldon Canal as they made their way from the Holly Bush at Denford to the Brindley Mill in Cheddleton.

The next walk will be to Tunnel Pool on the Leek arm. Listen out for the date.

## **JULY at ST LUKE'S**

**2<sup>nd</sup> SUNDAY**

**9.15am HOLY COMMUNION -  
Rev Barry Wilson**

**11.00am CONNECTIONS**

**9<sup>th</sup> SUNDAY**

**9.15am MORNING WORSHIP –  
Barrie / Roger**

**11.00am CONNECTIONS**

**16<sup>th</sup> SUNDAY**

**9.15am HOLY COMMUNION –  
Fr David Nicol**

**11.00am CONNECTIONS**

**23<sup>rd</sup>\* & 30<sup>th</sup> SUNDAYS**

**9.15am MORNING WORSHIP –  
Barrie / Roger**

**11.00am CONNECTIONS**

*\* Special service on 23<sup>rd</sup> see p16.*



Sunday at 11am  
at St Luke's CE Academy,  
Leek Road in the school hall.

**THIS IS A FAMILY-FRIENDLY  
SERVICE**

lasting about 40 minutes followed  
by games for the children and  
refreshments.

## **JULY at ST CHAD'S**

**2<sup>nd</sup> SUNDAY**

**10.45am PET SERVICE - KH w team**

**9<sup>th</sup> SUNDAY**

**10.45am PRAYER & PRAISE – KH / MF**

**16<sup>th</sup> SUNDAY**

**10.45am HOLY COMMUNION  
– Rev Barry Wilson**

**23<sup>rd</sup> & 30<sup>th</sup> SUNDAYS**

**10.45am MORNING PRAYER - MF / KH**

### **ST CHAD'S: PET SERVICE**

**Sunday 2<sup>nd</sup> July at 10.45 and**

**FLOWER ARRANGING DEMO**

**Wednesday 19<sup>th</sup> July at 7.00pm**

**see pp 3 & 4**

### **ST LUKE'S CHURCH OFFICE**

Unless involved with funeral duties or is  
unwell, Barrie mans the office on Mon,  
Wed, and Fri from 10.30am to 1.00pm  
using **07517 653370**. During these times  
the church is open for private prayer.

### **ECUMENICAL MIDWEEK SERVICES on WEDNESDAYS**

**Holy Communion at 9.15am**

July 5<sup>th</sup> at Methodist Church

July 12<sup>th</sup> at St Luke's

July 19<sup>th</sup> at the Methodist Church

July 26<sup>th</sup> at St Luke's





All things bright and beautiful,  
All creatures great and small,  
All things wise and wonderful,  
The Lord God made them all!



**St Chad's Bagnall**  
warmly invites you and your pet  
to the annual  
**Outdoor Pet Service**



**Sunday 2nd July 2023**

**10.45am**

**Bagnall Church Yard**

(weather permitting, otherwise indoors)



Come along and join with us as we celebrate the pets that we  
have the pleasure and privilege of sharing our lives with!

**All variety of pets welcome!**



**ST CHAD'S CHURCH,  
BAGNALL**

**Flower Arranging  
Demonstration**



**Wednesday 19<sup>th</sup> July  
at 7.00pm in church**

**Tickets £5.00 including refreshments  
with a chance to win one of the arrangements**

**Refreshments: Coffee/Tea and scones**

**Please contact Esther on 07962 223383**

**WhatsApp message (preferred)  
text or phone to book your place**

## PASTORAL TEAM

- **HILLSWOOD LODGE CARE HOME**

Although there is limited space in the lounge area volunteers are welcome to help boost the singing. There is room for 6 or 7 of us. **The next dates are Wednesdays July 12<sup>th</sup> and August 16<sup>th</sup> at 11.00am.** Please inform Shirley or Rev Patricia if you are able to come. The residents really do enjoy these services and the chats afterwards.

- **WALKS followed by COFFEE / LUNCH**

Members of the pastoral team also arrange short walks followed by either coffee or a light lunch at a café. Listen out for details of the next walk.

---

## The Methodist Church

- **Every Sunday** 10am Worship
- **Monday** 10am – 1.30 Community Café (not bank holidays)
- **Wednesday** 9.15 Holy Communion Alternately with St Luke's Parish Church
- **Thursday** 10.30 Fit-as-a-fiddle Exercise, conversation and coffee
- **Thursday** 20<sup>th</sup> July 2pm – 3.30pm Bereavement Café **at St Luke's** (*note change of venue this month*)
- **Fridays** 14<sup>th</sup> and 28<sup>th</sup> July 10am – noon Carers' Café
- **Friday** 6pm 'Blast' – youth club for 7-11 year olds (during term time)



---

## WELL DRESSING DISPLAYS

An enormous 'THANKYOU' to everyone who helped in any way to put together the amazing displays for Well Dressing Weekend. Over 20 people were involved in imagining and creating arrangements to portray 'Earth', 'Air', 'Fire' and 'Water' and they were just amazing! Thank you, also, to everyone who entered the photography competition (raised £84) and to the children from St. Luke's CE Academy who entered their art works. I'm sure we will be running these competitions every year from now on. There were so many lovely comments and compliments from our visitors. I wonder how we'll top this year's offering, but I know we will! **Sue Forrester**



# FLOWER FESTIVAL and PHOTOGRAPHY COMPETITION

*Congratulations to all our winners!*



faithful volunteers, members of the F & C Club and friends. The weather was superb and plenty of visitors came through our doors to admire the displays and take refreshment in the chapter house.



Our flower and photo festival was a huge success due to the herculean efforts of our



The total raised from teas, raffle, photo competition, cash and card donations came to over £1500 with some still to come from Gift Aid. **We are indebted to the valiant souls who cleared up and restored our church to normal in time for services the following Sunday.** (See p5 note from Sue.)



**Children from St Luke's CE Academy** also took part depicting the Four Elements in the form of paintings and collages. The winners were each given a large bar of chocolate but each entrant received a small packet of sweets.

- Jack – Reception
- Frederick Y2
- Oona Y3
- Beatrice Y4
- Jessica and Ava Y5





DIOCESE OF  
LICHFIELD



**Come follow Christ in the footsteps of St Chad**

## **WILL YOU JOIN US FOR RIDE AND STRIDE DAY THIS YEAR?**

Church buildings are a great asset for our communities: for worship of course but many other things as well. Like all buildings they have to be maintained and this is usually undertaken by a dedicated band of volunteers. Can you help by raising funds for this work?

Ride and Stride is the sponsored event in aid of the Staffordshire and Shropshire Historic Churches Trusts. On the second Saturday of September every year, all over England, cyclists, walkers and drivers are sponsored to visit churches. Last year even saw pilgrims by pony and trap and rickshaw!

Churches open between 10am and 6pm to receive them. Half the money raised is used by the Trusts to make grants to churches of all ages and denominations towards the continuing cost of repairs and maintenance, the other half is given to the church of your choice to use in any way they think fit.

Ride and Stride day (9 September this year) is also of course the best time in the year to visit churches, find them open throughout the day, and remind yourself what a wonderful collection of church buildings we have in the diocese. Highly recommended this year is a group of nine churches in the southern border of Staffordshire and Shropshire – St Jude's Wolverhampton, Tettenhall Wood, Patshull, Bobbington, Swindon, Trysull, Himley, Wombourne and Pattingham.

Would you consider getting involved as a cyclist/walker/driver or as a welcomer at your local church? For more information contact the county organisers (links at the end of this article).

Bishop Michael lends his support: "We are blessed in Staffordshire and Shropshire with an abundance of historic churches, passed into our stewardship through the generosity and faithfulness of past generations. The Historic Churches Trusts provide invaluable help in the often costly task of maintaining and safeguarding these buildings. The annual Ride and Stride event is indispensable to its continuing ability to offer this support; it is also an enjoyable and interesting day out."

*John Wallbridge is the Ride & Stride organiser for Staffordshire Historic Churches Trust, contactable at [jwallbridge@hotmail.co.uk](mailto:jwallbridge@hotmail.co.uk)*

*David Hardham is the county Ride & Stride organiser for the Shropshire Historic Churches Trust organiser, reached via [dhardham@yahoo.co.uk](mailto:dhardham@yahoo.co.uk).*

*For further information about the Historic Churches Trusts, visit those for our counties: Staffordshire (including the Black Country): [www.StaffordshireHistoricChurchesTrust.org](http://www.StaffordshireHistoricChurchesTrust.org) and Shropshire: [www.shropshirehct.org.uk](http://www.shropshirehct.org.uk)*

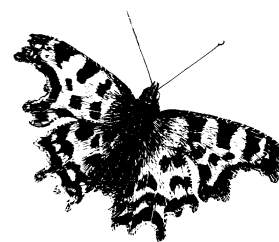




## Brimming with Butterflies

July is the month for sunshine, flowers and butterflies.

Butterflies are seen as indicators of a healthy, well managed habitat – if you have several species of butterfly it is likely that you have a rich variety of native plants. The UK has 59 species of



butterflies – 57 resident species and 2 regular migrants (the Painted Lady and Clouded Yellow). Butterflies that overwinter as dormant adults include Brimstone, Small Tortoiseshell, Peacock and Comma and can often be seen in churches, chapels or outbuildings from which they emerge when the weather warms up.

While most butterflies are not choosy what plant they obtain their nectar from, they are particular about where they lay their eggs. For example, Skippers, Meadow Brown, Gatekeeper and Ringlet all lay their eggs on grasses while Peacock caterpillars like munching on nettles, and Painted Lady on thistles. Brimstone choose buckthorn (purging or alder buckthorn) while Common Blue's caterpillars need bird's-foot trefoil, black medick, rest harrow or red clover.

Churchyards with their mix of sunny and shaded places can hold both grassland and woodland butterflies and if you see a butterfly high in the canopy of an oak it is probably a Purple Hairstreak. Speckled Wood is a common find in shady places, its caterpillars favour the coarse, tussocky grasses that you might have against a wall or hedge. Commas by contrast prefer shorter vegetation and will be emerging in July, so look out for the distinctive wing shape and tiny white 'comma' on the underside of the wing.

We would love to know what species you see – please visit our website to download spotter's guide to butterflies and see what you can find.

All the best, Harriet Carty

*Diocesan Churchyard Environmental Advisor, [harriet@cfga.org.uk](mailto:harriet@cfga.org.uk),*

[www.caringforgodsacre.org.uk](http://www.caringforgodsacre.org.uk) - individuals and groups in the diocese receive 20% members discount on all CfGA materials. Use the discount code **diomem22**





# CANDLE DEDICATIONS

## for JULY

For £2.50 you can keep the Candle of Hope or the Sanctuary Light burning for a week with a dedication. **Please contact Shirley Brindley on 504089 if you would like a particular date.**

Jul	CANDLE OF HOPE	SANCTUARY LIGHT
2 <sup>nd</sup>	Ann Boulton in loving memory of Nicola	Barrie Jackson in celebration of Alice's birthday
9 <sup>th</sup>	Mabel McGrath remembering the life and witness of Winnie Taylor and May Pointon	Barrie Jackson in celebration of Zak's birthday
16 <sup>th</sup>	Sylvia Bradshaw to celebrate the 13 <sup>th</sup> birthday of her granddaughter. Olivia	Anon remembering the life and witness of Edna Bond
23 <sup>rd</sup>	The candle is kept burning by June and Peter Pope	The candle is kept burning by Marilyn Plant
30 <sup>th</sup>	Sheila and Stan to celebrate their wedding anniversary	Maureen and Alan Payne Always remembered: Chris Maltby, Phil, Robb and John Pagan

Happy Birthday!



## JULY GREETINGS to

Matilda Houston-Brown (9<sup>th</sup>), David Morris (13<sup>th</sup>),  
Janet Bowyer (16<sup>th</sup>), Joshua Harrison, Ann Boulton (20<sup>th</sup>),  
Rob Barlow, Lynne Marshall (27<sup>th</sup>), Lyn Pickering (29<sup>th</sup>)  
**If you would like your own or a family birthday included here  
please contact Ros 504137**

## Our June....

All at St Luke's were deeply saddened to hear of the death of June Pope who celebrated her 80<sup>th</sup> birthday on June 2<sup>nd</sup>. June was a faithful member of our church for decades being among the first to offer help with whatever needed doing and was a member of the warden's team assisting with weddings and baptisms. Always concerned for the welfare of others she seldom spoke of her own ailments. An eternally cheerful and caring person, it is hard to think of Endon without her. She was a loyal supporter of Endon Dramatic Society where she and husband Peter were stalwarts. At the play interval there was always a smiling June on the other side of the counter serving tea and coffee! She will be greatly missed. Our hearts go out to Peter and daughter Lynn. Thank you Lord for June.





### *Lindsey writes...*

Well, May turned out to be another quieter month, with the figures shown below and the figures for May 2022 in brackets:

<b>Total vouchers fulfilled</b>	<b>= 78</b>	<b>(80)</b>
No. of Adults fed	= 116	(113)
No. of Children fed	= 71	(73)
<b>Total no. fed</b>	<b>= 187</b>	<b>(186)</b>

So, the figures are steady, without the very high numbers that we were seeing in the run up to Christmas. The clients that we are seeing however have many and complex needs, which we are able to address more fully without such a huge demand on our time. Yesterday, for example, we experienced homelessness, mental health crisis, domestic abuse, and the usual looking after first-time clients through what is such a difficult step to take. Thankfully, we now have a very robust network of support organisations that we can talk to and enlist help from. It is so much more than just handing out bags of food, and, again, I need to give huge credit to the volunteers who really do an amazing job in looking after our clients.

Of the 78 vouchers fulfilled in May, 26 of them stated mental or physical health conditions as a reason for referral. In a recent interview with Trussell Trust, I was asked which clients or group of clients affected me the most, and I said that it was those who were dealing with serious health issues, yet, at the same time, having to seek help from the Foodbank as well. It is heart breaking to see them struggling financially whilst facing huge challenges with their own wellbeing.

When looking at the source of the vouchers, as is the norm now, we generated most – 24 – as we have a number of clients who come directly to us for the first time, or return to us on a regular basis. We issue the vouchers, whilst ensuring that they have received all the appropriate financial advice and support from Matt. Citizens Advice themselves issued 14 vouchers, but what is very telling is that another 14 of the vouchers were issued by mental health organisations. Indicative I think of the toll that the current financial climate is taking on so many.

This month we held our first food drive day at Sainsburys, simply standing in the foyer and handing out copies of our shopping list to the customers. This produced an amazing 150kg of food in just 4 hours, all of which was food that is on our core distribution list, so an excellent result. We have another two days planned for July when we are hoping for equally good hauls.

We have also started to collect “surplus” goods from both Lidl and Aldi on a regular basis, now that we are members of Neighbourly. This means that we are able to collect any goods which are about to go out of date or which have damaged packaging, which gives

our clients a little more variety in what they get to take home. Last week we were able to offer some organic eggs and a huge array of fresh flowers. Whilst the latter are obviously not an essential item, it is lovely to see the smile it puts on the clients' faces when we hand them out.

Our standard shopping list remains the same, but items that we are in particular need of are highlighted in bold :

<b>Longlife semi-skimmed milk</b>	<b>Fruit squash</b>	Cereals
Pasta sauce	<b>Sponge puddings</b>	Tinned tomatoes
<b>Tinned vegetables</b>	Tinned rice pudding	Coffee
<b>Instant mash</b>	Rice	<b>Tinned meat</b>
Tinned potatoes	<b>Tinned fish</b>	<b>Tinned fruit</b>
<b>Tinned soup</b>	Custard	Biscuits/snack bars
Ketchup/brown sauce		

## ***NEXT COLLECTION at St Luke's and Connections Sunday July 2<sup>nd</sup>***

---



### **CONNECTIONS CHANGE... Goodbye Neil and Thank you!**

Sadly Neil Taylor will be leaving the Connections team after June 25<sup>th</sup> as he feels that it is now time for him to move on. He has been a member of the team since it began over 8 years ago at St Luke's CE Academy with Rev Alan and Maryanne. Almost every Sunday the team (Dave, Deb, Sue and Neil) get together to open up, unset the alarm, set up tables and chairs, put out the banners, mats, toys, refreshments, set up the computer, prepare an activity, lead talks and prayers, meet up with those who come along and then put it all away again!

You will be greatly missed Neil but we thank you for all your hard work and commitment during this time and we pray that the Lord will bless you and lead you on to further His work in pastures new which will include continued involvement in Connect 2 at Brown Edge which takes place at teatime on Sundays at the village hall.





## FLOWER & CRAFT CLUB

Our June meeting was well attended by around 20 happy ladies busily creating some very attractive displays using largely flowers and greenery from their own gardens and without using oasis as it is non-recyclable. Being a hot afternoon cups of tea were consumed in great quantity! The session was completed by Pauline Shaw who demonstrated how to make an arrangement to display in the garden. She also used flowers and greenery from her own garden and used chicken wire to secure the stems. I think you'll agree the finished result looks stunning. The club will be taking a break over the summer and will meet again on Wednesday, September 13<sup>th</sup> at the usual

time of 1 – 3 in the chapter house. Remember you are welcome even if you don't want to arrange flowers but simply have a cuppa and a chat.

**Special church service July 23<sup>rd</sup> see p16.**

## FOOD SHORTAGES? Barrie writes....

With all the current concern over rising food prices and potential shortages due to the war in Ukraine, I thought it might be interesting to look at HM Gov't wartime food allowance! Let me know how you get on – it makes Slimming World look like gluttony!

### WW2 ONE WEEK'S RATION

(1oz = 28g)

2 oz Butter

2 oz Cooking Fat

4 oz Margarine

3 oz Cheese

4 oz Bacon or Ham

1 shilling & two pennies worth of meat (6p) [approx £2.75p today]

8 oz Sugar

2 oz Tea

1 Fresh Egg

1 Pack – 12 Dried Eggs (per month)

3 Pints Milk

1 Tin Dried Milk (3 pints per month)

1 lb Jam (every 2 months}

\*\*\*\*\*HELP PRESERVE THE JAM RATION\*\*\*\*\*

EMPTY JARS WANTED

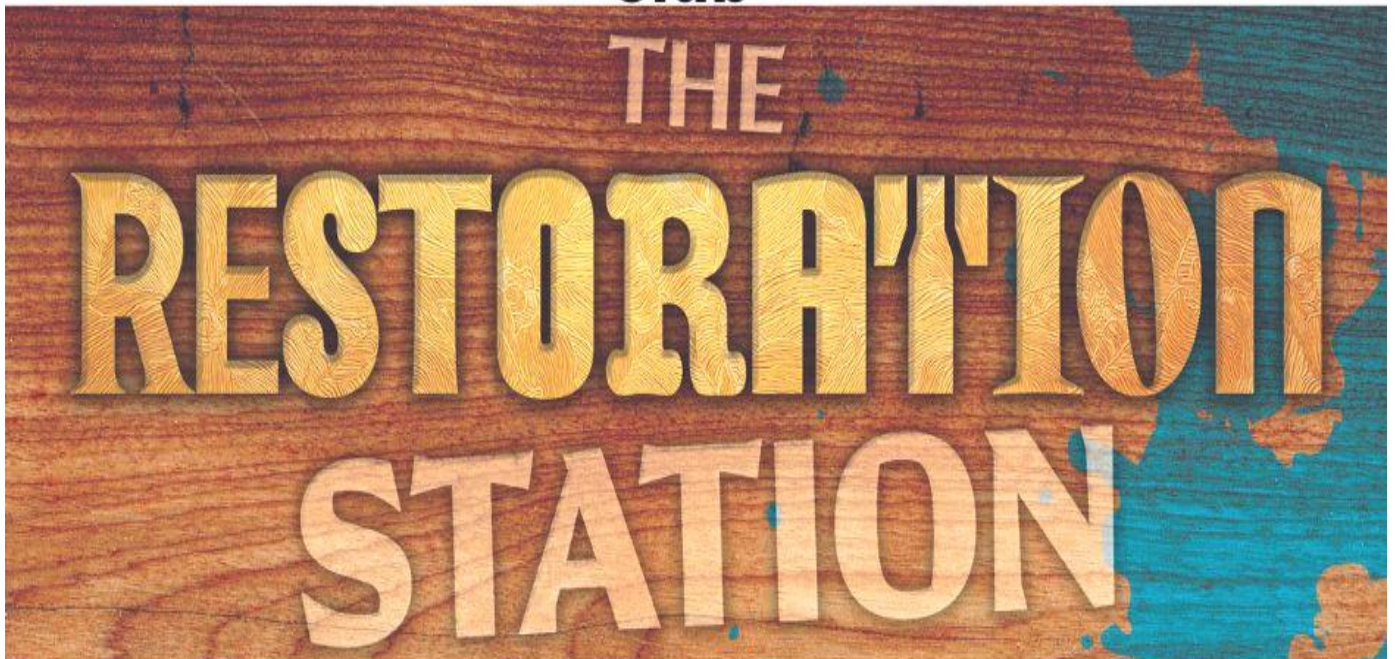
Have them ready for House-to-House Collection, or take them to the nearest Collection Depot

*Fun for the summer hols!*

*Please pass on the word to any young families you know in Endon....*

## **Endon Methodist Church Summer Holiday**

**Club**



**1st, 2nd & 3rd August 10am -12 noon  
For ages 5-11**

**Join us for games, crafts, stories & more!**

**To book a place contact**

**Office: 01538 752046**

**Email:**

**[kidsclub@staffmoorlandsmethodists.org.uk](mailto:kidsclub@staffmoorlandsmethodists.org.uk)**



# July Prayer Focus

- **Parts of Ukraine devastated by the flooding after the bombing of the dam and the risk of lack of cooling water for the nuclear plant further upstream**
- **Recent serious concerns about the growth of Artificial Intelligence and its influence on all our lives**
- **Safe passage for those caught up in the current fighting in Sudan and an end to the conflict**
- **King Charles III and all working members of our royal family**
- **Safety for those attending mosques following the incident whereby an elderly man was set alight on his way home**
- **The recent upsurge of violence in Northern Ireland**
- **The current threat from China supporting Russia in the war in Ukraine**
- **The threat to Taiwan from China**
- **Those in Turkey, Afghanistan and Syria still in desperate need after devastating earthquakes**
- **All the aid agencies and volunteer recovery teams**
- **Urgent resources for Ukraine**
- **Ukrainian refugees especially children taken from their families and sent to Russia**
- **Those taken prisoner by the Russians**
- **An end to the war**
- **The government of our country**
- **Our NHS**
- **Climate change and that the COP27 conference will bear fruit**
- **Those affected by the severe floods and landslides and those trying to help them**
- **Those seeking justice for women in Iran and regime change**
- **For those on low incomes in the light of the rise in energy bills**
- **Those coping with severe weather conditions here and in other parts of the world due to climate change**
- **Organisations striving to get aid into Afghanistan where women have been banned from working as aid workers**
- **East African countries on the verge of famine**
- **The problem of people-trafficking across the Channel and those seeking asylum**
- **All hostages in Iran awaiting release especially Morad Tahbaz and Mehran Raoff**
- **Improved safety for women on our streets**
- **The huge problem of loneliness**
- **Refugees in Yemen and the US border with Mexico**
- **All suffering at the hands of deeply corrupt governments**
- **Loved ones in our parish who are currently unwell**
- **Our church wardens and worship leaders during the interregnum**
- **The future of our benefice after 3 years of interregnum**
- **The Church of England dealing with a shortage of clergy and funds**
- **Those affected by the recent upsurge in knife crime**
- **The widespread drug problem especially in Stoke-on-Trent**
- **Lou Macari's hostel for the homeless in Hanley**
- **The problem of the millions of plastic bottles afloat in our oceans and the tons of 'space junk' orbiting our planet**
- **All who have lost loved ones recently**
- **The Trussell Trust food banks still needed as much as ever**

Roger Simpson, St Luke's warden / worship / PCC chair	01782 502006
Barrie Jackson, reader / St Luke's PCC Sec / Administrator (* tel no for church enquiries)	07510 074097 07517 653370*
Rev Philip Robinson (minister w Permission to Officiate)	07983 863372
Rev Patricia Robinson (organist, also minister w PtO)	07854 418488
Revs Philip & Patricia Robinson (landline)	01782 502448
Sue Forrester, Flower & Craft Club / Foundation gov / Safeguarding Officer / St Luke's Facebook	07854 043187
Deb Podmore, Connections / school chaplain	01782 773383
Sheila Simpson, St Luke's Electoral Roll Officer	01782 502006
June Pope, St Luke's warden's team	01782 503269
Shirley Brindley, candle dedications / pastoral tm	01782 504089
Steve Dale, St Luke's treasurer	07894 098011
Sheila Hurst, St Luke's Gift Aid Sec / MU rep	01782 503622
Ros Benson, newsletter / St Luke's website	01782 504137
Kath Howell, St Chad's PCC chair / warden / worship leader / safeguarding officer	01782 304616
Julia Podmore, St Chad's warden / treasurer	07980 802121
Pat Saul, St Chad's PCC vice-chair / secretary	07973 863930
Muriel Finney, St Chad's worship leader	01782 302229
Peter Millard, St Chad's buildings / warden's team	01782 505338
Emma Ashworth, St Chad's warden's team	07861 730806
Sheila Tipper, St Chad's news contact	01782 534647

For the duration of the interregnum the newsletter is available on-line as a PDF attachment and on the church website.

Paper copies are available for those without internet access.

Please submit notices for our next newsletter to Ros Benson

by **Tuesday, July 25<sup>th</sup> 2023.**

either by e-mail [jandrbenson@btinternet.com](mailto:jandrbenson@btinternet.com) or phone 504137.

---

***Please note:***

## **SERVICE OF THANKSGIVING FOR THE FLOWER FESTIVAL AND WELL DRESSING**

All are welcome to this special service at 9.15am on  
**Sunday July 23<sup>rd</sup>** to say thank you to all those who created the floral displays, photographic displays and helped out in many other ways to make our well dressing weekend such a success. There will be cakes!