



# THE UNITED BENEFICE of ST LUKE'S, ENDON with ST CHAD'S, BAGNALL

*Encounter, Encourage, Enable ... Committed to Sharing God's Love*

[www.endonstlukes.org.uk](http://www.endonstlukes.org.uk)

Vestry (church office): 01782 502166 or 07517 653370



**September 2023**

**INTERREGNUM Month 39**



*No, not our new vicar  
but he's the nearest we  
have for the moment!!*

## **HARVEST LUNCH with FOOD BANK COLLECTION**

**Sunday 24<sup>th</sup> September** at noon in the school hall.

This will take place after the Connections service and is intended to be a whole church event. Places will need to be booked and a donation of £5 per person is suggested. It will be a cold lunch of sandwiches, savoury items, cakes and fruit. Please do make an effort to join in.

## **SEPTEMBER at ST LUKE'S**

### **3<sup>rd</sup> SUNDAY**

**9.15am HOLY COMMUNION –  
Rev Philip**

**11.00am No CONNECTIONS**

### **10<sup>th</sup> SUNDAY**

**9.15am MORNING WORSHIP –  
Barrie / Roger**

**11.00am CONNECTIONS**

### **17<sup>th</sup> SUNDAY**

**9.15am HOLY COMMUNION –  
Rev Philip**

**11.00am CONNECTIONS**

### **24<sup>th</sup> SUNDAY**

**9.15am HARVEST MORNING  
WORSHIP – Barrie / Roger**

**11.00am CONNECTIONS  
HARVEST LUNCH**



Sunday at 11am  
at St Luke's CE Academy,  
Leek Road in the school hall.

**THIS IS A FAMILY-FRIENDLY  
SERVICE**

lasting about 40 minutes followed  
by games for the children and  
refreshments.

## **SEPTEMBER at ST CHAD'S**

### **3<sup>rd</sup> SUNDAY**

**10.45am FAMILY SERVICE - KH w team**

### **10<sup>th</sup> SUNDAY**

**10.45am PRAYER & PRAISE – Rev  
Patricia / MF**

### **17<sup>th</sup> SUNDAY**

**10.45am HOLY COMMUNION – Rev BW**

### **24<sup>th</sup> SUNDAY**

**10.45am MORNING PRAYER - MF / KH**

Two notes :

**\*NO CONNECTIONS SERVICE on  
Sunday September 3<sup>rd</sup>.**

**Also the tap in the churchyard  
has now been mended.**

## **ST LUKE'S CHURCH OFFICE**

Unless involved with funeral duties  
Barrie mans the office on Mon, Wed,  
and Fri from 10.30am to 1.00pm using  
**07517 653370**. During these times the  
church is open for private prayer.

## **ECUMENICAL MIDWEEK SERVICES on WEDNESDAYS**

**Holy Communion at 9.15am**

Sept 6<sup>th</sup> at St Luke's

Sept 13<sup>th</sup> at Methodist Church

Sept 20<sup>th</sup> at St Luke's

Sept 27<sup>th</sup> at Methodist Church

## PASTORAL TEAM

- **HILLSWOOD LODGE CARE HOME**

Although there is limited space in the lounge volunteers are welcome to help boost the singing. There is room for 6 or 7 of us. **The next dates are Wednesdays September 20<sup>th</sup>, October 18<sup>th</sup>, November 15<sup>th</sup> and December 29<sup>th</sup> at 11.00am.** Please inform Shirley or Rev Patricia if you are able to come. The residents really do enjoy these services and the chats afterwards.

- **WALKS followed by refreshments**

Members of the pastoral team also arrange short walks. Ten of us met at Tittesworth on Thursday, August 10<sup>th</sup> and completed the short walk through the woods near the lake followed by coffee and cake at the café. Listen out for details of the next walk.

---

## The Methodist Church

- **Every Sunday** 10am Worship  
3<sup>rd</sup> Sept Special Anniversary Service with Rev Anne Gibson
- **Monday** 10am – 1.30 Community Café  
(not bank holidays)
- **Wednesday** 9.15 Holy Communion  
Alternately with St Luke's Parish Church
- **Thursday** 10.30 Fit-as-a-fiddle  
Exercise, conversation and coffee
- **Thursday** September 21<sup>st</sup> 2pm – 3.30pm Bereavement Café
- **Fridays** September 8<sup>th</sup> & 22<sup>nd</sup> 10am – noon Carers' Café
- **Friday** 6pm 'Blast' – youth club for 7-11 year olds (during term time from September 8th)



---

**Rev Barry Wilson** gave St Luke's his last Service of Holy Communion on August 6<sup>th</sup>. We have enjoyed having him with us for much of our interregnum on the first Sunday of the month, on loan from Leek, St Luke's. He says he has enjoyed coming to us and we hope he has always felt very welcome. We shall miss Rev Barry, but we are delighted that Rev Philip Robinson has kindly offered to step in from September. We are also glad to have Rev Patricia back to play the organ now her broken wrist is sufficiently mended. St Chad's were very pleased to have her take a service recently.



**You are invited to a  
presentation  
and supper**

**My Amazing  
Australian Adventure  
with Rev Eleanor Smith**

**In July 2023 I spent three weeks in Western Australia:**

- \* Working in a church at Floreat, Perth
- \* Welcomed into the Aboriginal Community of Mowanjum in the Kimberley
- \* Retreat at the Benedictine Monastery of New Norcia
- \* Exploring Perth



**Saturday 16<sup>th</sup> September at 6pm  
Endon Methodist Church  
Station Road, Endon**



***Please bring  
a plate of food to  
share***

**Donations to the  
Floreat Church charity  
supporting the education of aboriginal children**





# CANDLE DEDICATIONS for SEPTEMBER

For £2.50 you can keep the Candle of Hope or the Sanctuary Light burning for a week with a dedication. **Please contact Shirley Brindley on 504089 if you would like a particular date.**

Sep	CANDLE OF HOPE	SANCTUARY LIGHT
3 <sup>rd</sup>	Anon in memory of Noreen Gould	Ann Boulton to celebrate Emma and Lee's wedding anniversary
10 <sup>th</sup>	In loving memory of June Pope	Barrie Jackson in celebration of Simon's birthday
17 <sup>th</sup>	Sylvia Bradshaw to celebrate the 17th birthday of her twin granddaughters. Lily and Emma	David Moss in loving memory of Nancy Moss, mother of David and Robert
24 <sup>th</sup>	Shirley and Roger to celebrate the birthday of their twin grandsons, William and Thomas	The candle is kept burning by Marilyn Plant



## SEPTEMBER GREETINGS to

Laura Morris (13<sup>th</sup>), Elizabeth McLintock (23<sup>rd</sup>),  
Duncan Woolliscroft, Simon Jackson (26<sup>th</sup>),  
Shirley Brindley (27<sup>th</sup>), Cat Mellor (30<sup>th</sup>)

**If you would like your own or a family birthday included here please contact Ros 504137**



## Our congratulations, love and best wishes to Cat and Andy Mellor

on the safe arrival of their baby boy Jude Frederick Hugo at 8lb 9oz on 31<sup>st</sup> July.

This is great news and we pray he will be a great blessing to his mum and dad as well as to his grandparents Rev Alan, Maryanne, Alan M and Rose.



## **Come follow Christ in the footsteps of St Chad**

### **CALLED TO SERVE?**

Did you know that 15 million people alive today attended a Church of England school? Today a quarter of all primary schools are Church of England schools and approximately 1 million children currently attend a Church of England School.

For hundreds of years, Church of England Schools have been at the heart of local communities. In the 1800s, a time when there were no state schools, the Church of England began a mission to set up a church school in every parish in England and Wales. At the heart of this mission, was the vision to provide an education for all, with the belief that moral and spiritual education, was as important to children as learning skills or a trade. Today this deeply Christian vision lives on, educating children to help them flourish regardless of their background or starting point, providing an education that enables 'life in all its fullness'. Could you be a part of this mission?

The Church School is an example of the Church working in the community and working for the community. Many Christians find the opportunity to serve the school in the community as a Foundation Governor extremely rewarding and gain a great deal of satisfaction from bringing their own skills and experiences to the governing body. Church schools are driven by a distinctive Christian vision which serves the whole community, people of all faiths and none. Church schools are distinctive in their collective worship and religious education offering, their ethos, and the ways in which this distinctively Christian vision is worked into the daily life of the school.

Governors are guardians of the school vision, keeping it alive and ensuring that it is implemented. They are also responsible for ensuring that the school upholds its Trust Deed which sets out exactly what it means to be a church school in the local parish. The expectation is that a church school will seek to offer excellence in education and will above all be concerned to develop the whole human being in a place where the Christian faith is lived daily. As a foundation governor, you will be ensuring that this is happening. As part of the role, you will need be involved in building relationships within the school community and finding out what happens in school. This might involve talking to leaders, meeting pupils and talking to them about school or looking at books. This will ensure you are well informed about the school. In addition, headteachers tell us the importance of foundation governors who are concerned about the staff and pupils in the school, those who 'check in' alongside the statutory role.

Do you feel called to serve? To be a part of educating children to help them flourish regardless of their background or starting point? Maybe you could share your life skills and expertise as a foundation governor in a Church of England school? You do not need a background in education but will need to commit to training to help with your role as a

Foundation Governor for your parish Church of England school. If you have any questions, please get in touch.

*Lynsay Jennings, Christian Distinctiveness Adviser, Governance Officer  
(Education Team)*

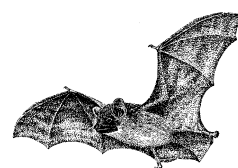
[lynsay.jennings@lichfield.anglican.org](mailto:lynsay.jennings@lichfield.anglican.org)



## Let's hear it for bats

If you were looking for bats in your local churchyard, where would you expect them to be? They are not in the belfry for a start, it's too noisy! Bats often use church buildings, and a bat roost may be nearly as old as the building with around 60% of

pre-16th century churches containing bat roosts. There are seventeen species of bat native to the UK; eight of these use churches or chapels.



Bats, like most animals, have different needs throughout the year. They need nursery roosts for the young, winter roosts to hibernate and also temporary roosts to digest their food and to sleep in during the daytime. Bats roost in clean, draught free, quiet crevices where the temperature is constant. Within churches or chapels bats are found in the eaves, porch, under roof tiles, in old timber joints, behind ceilings, hangings and commemorative plaques. They also roost within chest tombs, in holes or cracks within a wall, behind ivy or in lychgates. As well as buildings, bats will use trees seeking out holes, crevices, flaking bark and gaps behind ivy. Old and veteran trees are full of possible bat roosting places, as well as being home to many other creatures.

Burial grounds tend to have a mixture of large trees, grassland, flowers, areas of long or tussocky grass, compost heaps, log piles and stonework. They are relatively free of chemicals and may have been there a long time. All of this leads to a good population of insects. Flying uses up a lot of energy so a site rich in insects is crucial for bats.

September is a great month to search for bats, as the nights are starting to draw in the bats will be flying earlier, so you don't have to stay up too late to see and hear them. They have left their nursery roosts and both adults and young are flying, hunting to put on fat which will help them survive the winter. Watching them hunt can be great fun and with a bat detector you can also hear them echo-locate as they search for prey. Why not contact the Bat Conservation Trust and see if there is a local expert who could run a public event for you? Knowing which bats use your churchyard can help you manage for them and also avoid any damage to either bats or their habitats.

All the best, Harriet Carty

*Diocesan Churchyard Environmental Advisor, [harriet@cfga.org.uk](mailto:harriet@cfga.org.uk),*

[www.caringforgodsacre.org.uk](http://www.caringforgodsacre.org.uk) - individuals and groups in the diocese receive 20% members discount on all CfGA materials. Use the discount code **diomem22**



### *Lindsey writes...*

I do hope that you are all managing to keep your spirits up as I look out on yet another wet and grey day. I've just shared a post on our Facebook page for a pantomime at the beginning of August – it feels strangely appropriate with the way the weather is behaving. We have seen quite a busy start to the school holidays, with the figures for July as follows (2022 figures in brackets):

<b>Total vouchers fulfilled</b>	<b>= 97 (74)</b>
No. of Adults fed	= 144 (103)
No. of Children fed	= 73 (74)
<b>Total no. fed</b>	<b>= 217 (177)</b>

Donations through the month have been helped enormously by three separate food drives I have done with our volunteers. Two of these days were at Sainsbury's and the third at Morrison's. Over the three days we received a huge 795.3kg of food and over £100.00 in cash donations. This is another reminder that we live in a wonderfully generous and supportive town. So, I send a massive thank you to all the volunteers who give up their valuable time, and to all the amazing people who give so freely.

Alongside our butcher's vouchers and Sainsbury's vouchers, we have now started to keep a supply of Farmfoods vouchers for distribution to our clients. This was a suggestion by the husband of one of our Team Leaders, who, when walking past the shop, remarked on how good the prices are – an indication of the level of commitment and interest our volunteers – and their families – have ! - and is another initiative on our part to try to ensure that our clients are able to enjoy a varied and nutritional diet.

We continue to receive fresh fruit and vegetables from our green fingered volunteers, but also from Aldi through the distribution of their surplus "out of date" food. In addition, we are purchasing a freezer, which will enable us to collect any frozen surplus goods from supermarkets, for secure onward distribution to our clients.

One of the most pleasing things for me in July has been the way in which we have expanded the in-house advice services available to our clients. The drop-in session by the Social Prescribers, Sarah, Leanne and Amanda, has been so amazingly valuable and I'm really hoping that resources will enable it to continue for the foreseeable future. And we also now have Suzie Noble, from Adullam Housing, coming in every Friday to assist with any housing related issues. Having these professionals in alongside Matt from Citizens Advice really does enable us to provide a substantive package of help and support to anyone coming to us for food.

I continue to try to spread awareness of the Foodbank and the services that we offer, with an interview on Leek Radio in July, and I will be appearing on Churnet Sound. There are two key messages that I want to share. Firstly, that we are here to help anyone in need, which I think is particularly important at the moment, as, with the increase in interest rates, we are likely to be seeing a lot more people who are in work and are homeowners. There is a misconception amongst some that you have to be unemployed and on benefits



in order to be able to obtain food from us, and I want to make it clear that this is not the case. And, secondly, to encourage anyone who feels that they do have spare resources, to consider donating to us, to help us to meet the increasing demands on our services.

Our shopping list remains the same, with everything in pretty short supply, so any donations will be very gratefully received, thank you. We have now added pasta to the list, which is the first time in my 5 years at the Foodbank that this has happened.

Longlife semi-skimmed milk	Fruit squash	Cereals
Pasta sauce	Sponge puddings	Tinned tomatoes
Tinned vegetables	Tinned rice pudding	Coffee
Instant mash	Rice	Tinned meat
Tinned potatoes	Tinned fish	Tinned fruit
Tinned soup	Custard	Biscuits/snack bars
Ketchup/brown sauce	Pasta	

**Household cleaning products:**

Washing up liquid  
Multi surface cleaner  
Cleaning cloths/sponges  
Laundry liquid/capsules/powder

**Toiletries:**

Shampoo and conditioner  
Shower gel and soap  
Toothpaste and toothbrushes  
Deodorant  
Razors and shaving foam

**Babies:**

Nappies – all sizes PARTICULARLY NEED SIZE 2 AT THE MOMENT  
Nappy bags  
Wet wipes  
Baby shampoo and bath lotion  
Cotton wool  
Talcum powder

If you are a donor, please try to deliver your donations at the Foodbank on Tues and Fri between 10.00 am and 12 noon – as it gets very busy with clients after this time. Alternatively, you may use any of our Permanent Collection Points which are still available at various locations listed on our website <https://leekdistrict.foodbank.org.uk/give-help/donate-food/>. We are also able to collect any large donations - please contact the Foodbank to arrange this.

If any of you would like to discuss anything relating to the Foodbank or arrange a visit, please contact me at [projectmanager@leekdistrict.foodbank.org.uk](mailto:projectmanager@leekdistrict.foodbank.org.uk) or on 07916 005064. We continue to welcome corporate volunteers, school groups and individual volunteers, and we are always very happy to show people around and share with them the work we are doing. Love, best wishes and blessings to you all.

*Lindsey Stockton, Project Manager*

***NEXT COLLECTIONS at St Luke's and Connections  
Sundays September 3<sup>rd</sup> and 24<sup>th</sup> (Harvest)***

# An Art Club...a new community initiative for St Luke's!

*Sue writes....*



Thank you to everyone who has shown interest in the proposed Art Club.

The first meeting will be on

**Saturday,  
30<sup>th</sup> September  
from 10.00 to 12.00**  
in the chapter house.

The leader will be Nicola Shipley. For the first session please bring a sketch pad and pencils; Nicola will demonstrate techniques for drawing still life and will be very encouraging to those who feel they have no talent in this area! A £2 donation will cover tea, coffee and biscuits. There is a limit on numbers due to space so please book your place via the sign-up sheet; bring a friend who doesn't come to church perhaps. You don't need to come every time and can book on to sessions that interest you.

**For any further information please contact Sue on 07854 043187.**

---

## Bishop Michael calls in at St Chad's, Bagnall



On a lovely summer's day, Saturday 19<sup>th</sup> August, a wonderful eleven-mile pilgrimage walk from Hulton Abbey, Stoke-on-Trent, to Dieulacres Abbey, Leek, in the footsteps of the Cistercian monks who prayed, worshipped and worked in North Staffordshire for 330 years... [#EcumenicalPilgrimage](#) [#Cistercian](#) [#staffordshiremoorlands](#)



# MORE NEWS FROM ST CHAD'S

Kath writes...



We held our annual bbq on Sunday 20<sup>th</sup> August at Longshutts. The sun shone, the food was great and 24 of us from young to a little older enjoyed a lovely time of fellowship together.



## St Chad's Harvest:

1st October - Family Harvest festival followed by lunch.



## FLOWER & CRAFT CLUB

The first meeting of the new term will be on

**Wednesday 13<sup>th</sup> September**  
in the Chapter House  
from 1pm to 3pm.

Pauline and Jeanette will be demonstrating an arrangement for the October meeting but please bring your own choice of flowers, foliage and container for this session. All welcome.

## CAKE STALL

**...please support!**

St Luke's Church will be running a cake stall in the village hall in aid of church

funds on **Saturday**

**9<sup>th</sup> September from 11 am onwards.**

Donations of cakes will be very much appreciated and can be dropped off at the hall from 10am on the day. There will be a sign-up list at the back of church.

See also notice on next page.



## YOUR FAVOURITE HYMNS

***Rev Patricia writes...***

Please will you let me know if there are any hymns you would like to sing in church that are not in Mission Praise. We are making a leaflet with the words of these hymns so that we don't have to keep printing them out.

You can speak to me at church, call or text 07854 418 488 or email [pmrobinson51@gmail.com](mailto:pmrobinson51@gmail.com)





# ENDON FUN DAY

Saturday 9th September  
12-4pm

ENDON VILLAGE HALL

FREE ENTRY

JOIN US FOR LOTS OF FUN!

Face Painting

Glitter tattoos

Bottle stall and raffle

Handmade local crafts

Endon Storm Troopers, Leek Town Crier

Charity Stalls

Magic Nannar Children's Entertainer

Yummy Food !!!

Stoke Reads and so much more ..

Raising funds for Endon Little Learners Playgroup

For more information contact Kate Walker: 07921253749

# September Prayer Focus

- Thankfulness for the rescue of children and teachers from a stranded cable car in a remote area of Pakistan
- Those going back to school, college and university especially for the first time
- Inhabitants of the Hawaiian island Maui devastated by wild fires and those in danger of wildfires in British Columbia.
- Southern European countries and California also suffering widespread effects of fire and searing heat
- Parts of Ukraine devastated by bombing and the people affected
- The serious consequences of shipments of grain being prevented from reaching their destinations, especially the African countries
- Those taken prisoner by the Russians
- An end to the war
- Recent serious concerns about the growth of Artificial Intelligence and its influence on all our lives
- Safe passage for those caught up in the current fighting in Sudan and an end to the conflict
- King Charles III and all working members of our royal family
- Safety for those attending mosques following the incident whereby an elderly man was set alight on his way home
- The recent upsurge of violence in Northern Ireland
- The current threat from China supporting Russia in the war in Ukraine
- The threat to Taiwan from China
- Those in Turkey, Afghanistan and Syria still in desperate need after devastating earthquakes
- All the aid agencies and volunteer recovery teams
- Our NHS
- Climate change and that the COP27 conference will bear fruit
- Those affected by the severe floods and landslides and those trying to help them
- Those seeking justice for women in Iran and regime change
- For those on low incomes in the light of the rise in energy bills
- Organisations striving to get aid into Afghanistan where women have been banned from working as aid workers
- East African countries on the verge of famine
- The problem of people-trafficking across the Channel and those seeking asylum
- All hostages in Iran awaiting release especially Morad Tahbaz and Mehran Raoff
- Improved safety for women on our streets
- The huge problem of loneliness
- Refugees in Yemen and the US border with Mexico
- All suffering at the hands of deeply corrupt governments
- Loved ones in our parish who are currently unwell
- Our church wardens and worship leaders during the interregnum
- The future of our benefice after 3 years of interregnum
- Those affected by the recent upsurge in knife crime
- The widespread drug problem especially in Stoke-on-Trent
- Lou Macari's hostel for the homeless in Hanley
- The problem of the millions of plastic bottles afloat in our oceans and the tons of 'space junk' orbiting our planet
- All who have lost loved ones recently
- The Trussell Trust food banks still needed as much as ever



**CONNECTIONS GREAT INDOOR PICNIC!** The rain came down but games were enjoyed in the hall instead by everyone.

## ***Enjoy a few Smiles:***

*(All these borrowed from St Chad's newsletter!!)*

*From a speech in the House of Commons:  
"Hands off the Church of England, it's the only thing that stands between us and Christianity,"*

*From a Parish Newsletter: "Children are normally collected during the Offertory Hymn."*

*From a school essay on classical music: "Beethoven wrote music even though he was deaf. He was so deaf he wrote loud music."*

*A Sunday School Teacher was telling the story of the Prodigal Son. "When the son came home, the father arranged a wonderful party and expected everyone to be happy. However, there was one for whom the feast brought only great sadness, Who do you think it was?" A sad little voice said, "Was it the fatted calf."*

*From a Parish Magazine: "It will be of great assistance if parishioners will attend to their own graves."*

*Two ministers carrying placards - first one says "Drink is the enemy", the second says, "Love your enemy."*

*"I am an atheist, thank God!"*

*The annual service for the Macclesfield and District Association of Butchers and slaughtermen was held at the Parish Church. As they filed in, the organist was playing "Sheep may safely graze."*



Roger Simpson, St Luke's warden / worship / PCC chair	01782 502006
Barrie Jackson, reader / St Luke's PCC Sec / Administrator (* tel no for church enquiries)	07510 074097 07517 653370*
Rev Philip Robinson (minister w Permission to Officiate)	07983 863372
Rev Patricia Robinson (organist, also minister w PtO)	07854 418488
Revs Philip & Patricia Robinson (landline)	01782 502448
Sue Forrester, Flower & Craft Club / Foundation gov / Safeguarding Officer / St Luke's Facebook	07854 043187
Deb Podmore, Connections / school chaplain	01782 773383
Sheila Simpson, St Luke's Electoral Roll Officer	01782 502006
Shirley Brindley, candle dedications / pastoral tm	01782 504089
Steve Dale, St Luke's treasurer	07894 098011
Sheila Hurst, St Luke's Gift Aid Sec / MU rep	01782 503622
Ros Benson, newsletter / St Luke's website	01782 504137
Kath Howell, St Chad's PCC chair / warden / worship leader	01782 304616
Julia Podmore, St Chad's warden / treasurer	07980 802121
Pat Saul, St Chad's PCC vice-chair / secretary	07973 863930
Muriel Finney, St Chad's worship leader	01782 302229
Peter Millard, St Chad's buildings / warden's team	01782 505338
Emma Ashworth, St Chad's warden's team	07861 730806
Claire Houston-Brown, St Chad's Safeguarding Officer	07779 667470
Sheila Tipper, St Chad's news contact	01782 534647

For the duration of the interregnum the newsletter is available on-line as a PDF attachment and on the church website.

Paper copies are available for those without internet access.

Please submit notices for our next newsletter to Ros Benson

by **Tuesday, September 19<sup>th</sup> 2023.**

either by e-mail [jandrbenson@btinternet.com](mailto:jandrbenson@btinternet.com) or phone 504137.



for supporting Leek and District foodbank.

Your donations make a BIG difference

to local people in crisis.



Leek and District foodbank is part of the Trussell Trust's UK wide foodbank network.  
Charity number 1153990. Registered in England and Wales