



# THE UNITED BENEFICE of ST LUKE'S, ENDON with ST CHAD'S, BAGNALL

*Encounter, Encourage, Enable ... Committed to Sharing God's Love*

[www.endonstlukes.org.uk](http://www.endonstlukes.org.uk)

Vestry (church office): 01782 502166



February 2022

INTERREGNUM Month 20



**FEBRUARY 6<sup>th</sup>** marks the  
70<sup>th</sup> anniversary of our  
Queen's accession, our  
country's longest serving  
monarch.

**GOD SAVE AND  
LONG LIVE OUR  
GRACIOUS  
QUEEN!**



**Hands up if you remember the Coronation!** Do you remember where you were on June 2<sup>nd</sup> 1953? I imagine there are many at both our churches who do. It is certainly one of my earliest memories... watching it on my uncle's television (black and white of course and bought especially for the occasion) with all the family, uncles, aunts and cousins crammed into my grandparents' living room. Even at three years old I was caught up in the excitement of this very special event. Maybe you have a story you would like to share? Let me know for a later newsletter please. **Ros**

## **FEBRUARY at ST LUKE'S**

**SUNDAY Feb 6<sup>th</sup>**

**9.15am SAMARITAN SUNDAY  
led by Roger**

**SUNDAY 13<sup>th</sup>**

**9.15am HOLY COMMUNION  
led by Rev Barry Wilson  
11.00am CONNECTIONS**

**SUNDAY 20<sup>th</sup>**

**9.15am HOLY COMMUNION  
led by Rev David Nicol  
11.00am CONNECTIONS**

**SUNDAY 27<sup>th</sup>**

**9.15am MORNING WORSHIP  
led by Barrie / Roger  
11.00am CONNECTIONS**

### **ECUMENICAL MIDWEEK SERVICES**

**Wednesdays 9.15am**

**Feb 3<sup>rd</sup> Methodist Ch**

Holy Communion

**Feb 10<sup>th</sup> St Luke's**

Morning Prayer

**Feb 17<sup>th</sup> Methodist Ch**

Holy Communion

**Feb 24<sup>th</sup> St Luke's**

Morning Prayer

### **ST LUKE'S PCC**

Our next PCC meeting will be  
on Zoom at 8pm on Thursday,  
**March 17<sup>th</sup> 2022.**

## **FEBRUARY at ST CHAD'S**

**Feb 6<sup>th</sup> 10.45am FAMILY SERVICE**

**led by KH and team**

**13<sup>th</sup> 10.45am**

**PRAISE & PRAYER led by MF**

**20<sup>th</sup> 10.45am**

**Holy Communion led by Rev Barry  
Wilson**

**27th MORNING WORSHIP led by KH**

*In this 20<sup>th</sup> month of interregnum, you may be wondering what progress, if any, is being made towards the appointment of a new incumbent. Barrie has some news on pages 3 & 4 but don't get too excited.*

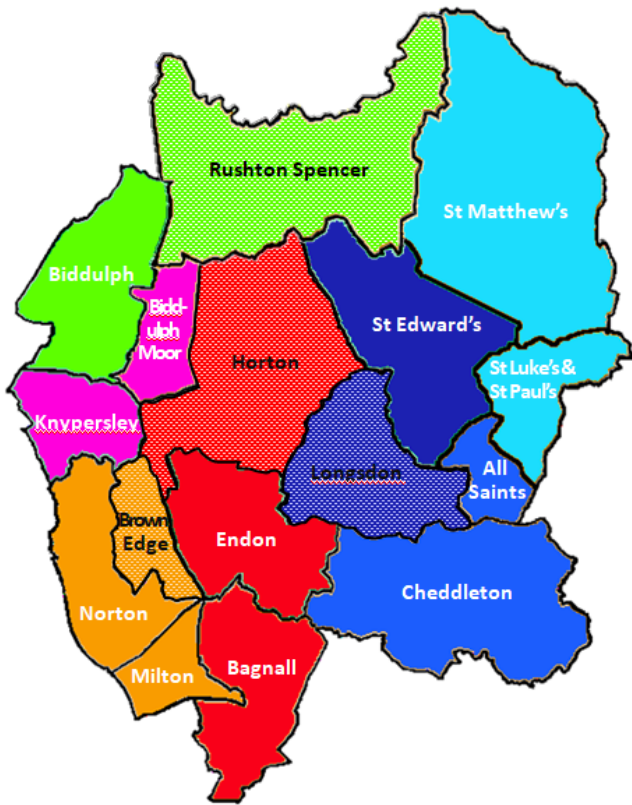
### **ST LUKE'S CHURCH OFFICE**

Unless involved with funeral duties, Barrie will man the church office in the vestry on Mon, Wed, Thurs and Fri from 10.00am to 1.00pm using tel: **07517 653370**. At these times the church is also open for private prayer. All enquiries relating to baptisms, weddings and funerals should be directed to Barrie.

### **ST LUKE'S CHURCH FUNDS**

*Please bring your gift or envelope to church or issue a cheque and post it to Sheila Hurst or set up a monthly standing order or use the 'Just Giving' link on St Luke's website. If you bank on-line you could pay directly into the church account by setting up Endon St Luke's PCC as a new recipient\*. (\*Bank details from Steve Dale or Sheila H. Phone nos back page.)*

**THANK YOU** to all our regular givers!



**LEEK DEANERY VISION  
January 2022**

**Approximate deployment across the 7 Benefices:**

<i>Biddulph 0.85 + Rushton Spencer 0.15</i>	<b>1.00</b>
<i>Knypersley 0.67 + Biddulph Moor 0.33</i>	<b>1.00</b>
<i>Norton 0.40 + Milton 0.45 + Brown Edge 0.15</i>	<b>1.00</b>
<i>Endon 0.50 + Bagnall 0.30 + Horton 0.15</i>	<b>0.95</b>
<i>St Edward's 0.85 + Longsdon 0.15</i>	<b>1.00</b>
<i>St Matthew's 0.20 + St Luke's &amp; St Paul's 0.80</i>	<b>1.00</b>
<i>All Saints 0.50 + Cheddleton 0.50</i>	<b>1.00</b>

**NEW INCUMBENT? Progress is being made but the vacancy has yet to be advertised...**

Here are a few notes taken by Barrie at the 'Shaping for Mission' Meeting at Milton – Tuesday 18<sup>th</sup> January.

Principal presenters: **Archdeacon Megan** and **Rev Nigel Irons**

**Proposal:**

Funding allocations to the Leek Deanery will allow for a maximum of 7 appointments (paid priests). It is proposed that each priest will be licensed to the entire Deanery (as in Group Ministry)

Each one of those will be full time, and each one will have an area of specialist missional expertise, viz:- 1. Audio Visual. 2. Schools work. 3. Mission Action Planning. 4. Community engagement. 5. Stewardship and Fundraising. 6. On-line activity (worship and livestream). 7. Development of contacts from "occasional offices", e.g. weddings, baptisms, etc.

The focus will be on "Missional Activity" –

ie, Criteria of any activity:- It must be - 1. missional. 2. do-able and 3. affordable.

Proposed to split the Deanery into the following groups; percentage points indicate how much of their priest's time is allocated to each church: -

1. Milton .45 + Norton .4 + Brown Edge .15
2. Biddulph .85 + Rushton Spencer .15
3. Bagnall .3 + Endon .5 + Horton .15\*
4. St Edwards Leek .85 + Longsdon .15
5. All Saints .5 + Cheddleton .5
6. St Matthews .20 + St Paul's & St Luke's .80

*\*You may be wondering why Endon, Bagnall and Horton are allocated 0.95% of a priest! Barrie or Neil may be able to explain.*

## **TIME LINE –**

- *Response to Proposal from each PCC within 2 months;*
- *Put to Church Commissioners as a “Deanery Plan” (likely time for acceptance is 6 months)*
- ***When accepted, then advertisements can be placed.***

### **Our Rural Dean and Patron of our Benefice, Rev Nigel Irons, adds...**

The Diocese is now entering into consultation with the Deanery Synod about the plan and the following process needs to take place:

- Every PCC needs to discuss the proposed plan and formulate any questions and comments on it.
- All questions will either be answered by me or forwarded to Archdeacon Megan for her response.
- A meeting of the Deanery Synod will take place after Easter in late April to discuss the proposal in the light of all the issues raised and see if we can reach a common mind about our response.
- If we can agree together we can then advise the Diocese of what we believe would be the best way forward and if they accept our recommendations they will then begin the process of getting the approval of the Area Mission and Pastoral Committee, the Diocesan Mission and Pastoral Committee and the Church Commissioners, in that order.
- Once the final Deanery Plan is approved the Diocese can then implement it, but will seek to find ways of making appointments to vacancies in the Deanery before then if that becomes feasible once the shape of the plan has been agreed in principle by the Deanery Synod.

There are two main areas that I believe we need to consider:

**THE PRINCIPLE:** are we happy that the proposed new alignment of parishes within the Deanery is the right one, and if not how else would we draw the map?

**THE PROPORTIONALITY:** do we believe that the indicative allocation of priests’ time to each parish is right? This is an important question and two things need to be born in mind and held in tension. **The first is whether each parish has the resources to pay their parish share to cover the proportion of priests’ time they have been allocated;** the second is whether the allocation itself is a fair reflection of the amount of time the priest will need to give to the parish. We have the opportunity to suggest changes to these figures if we believe that they are necessary and we need to consider this matter carefully.

***PLEASE PRAY FOR OUR PCCs in these vitally important matters which deserve much thought and careful consideration. The future of our Churches depends on making the right decisions. We all want our Churches to grow and prosper especially in these times when many folk have no faith at all. We need to keep showing that Jesus and His teachings are no less relevant today than they were 2000 + years ago.***





## FLOWER & CRAFT CLUB

The dates for the next three Flower & Craft Club meetings are:

- February 8<sup>th</sup>
- March 9<sup>th</sup>
- April 6<sup>th</sup>

Meetings are in the Chapter House as usual from **1.00pm to 3.00pm**.

At our last meeting Pauline gave us a demonstration of a vertical arrangement for us to try next time.

We are planning to put together a flower display over the Well Dressing/ Platinum Jubilee weekend, perhaps including local residents' memories and work from the children of St Luke's CE Academy. More information to follow.

I look forward to seeing everyone at the February meeting. All are welcome to join us.

---

## CONNECTIONS

If you know anyone who is looking for a family-friendly, relaxed service, do tell them about the Connections group which meets in the school hall **every Sunday at 11 am**. Deb Podmore and Neil Taylor lead the worship and would be glad to welcome new people.

*Sue Forrester*



On 23<sup>rd</sup> January we said goodbye to Nathan and Rachel O'Neill (and their little daughter Evelyn) who have been helping to lead the worship at Connections since it began. As they now live at Stretton near Burton-on-Trent it has been quite a long journey for them each Sunday and understandably they feel they need to find a place of worship nearer home. Nathan has joined the team at Burton 'Youth for Christ'. (Sadly Rachel and Evelyn were not able to be present

for their last Sunday at Connections due to Evelyn having conjunctivitis.)

We thank Our Lord for their commitment to St Luke's over the years and ask His blessing on them in the years ahead.

**Sheila H writes...**



## MOTHERS' UNION SUBS 2022

All MU members (except Elaine Morrey, who has moved out of the area) have renewed subscriptions and in so doing are supporting the Aims and Objectives of MU. I am sending £220 in subs, and a further £120 to support the three projects. Many thanks for your support and your prompt replies.

### LENT LUNCH 2022



**March 2<sup>nd</sup>**

**...a date for your diary!**

Assuming there are no more Covid19 restrictions placed on us we are intending to run a Lent Lunch again this year.

**When?** Ash Wednesday, March 2nd from 12 noon until 2.00pm (last orders 1.30 pm)

**Where?** In church, allowing more space for social distancing.

**What will there be?** Homemade soup and roll, cheese and biscuits and fresh fruit.

**What will the donations go to?** As we have had no information about the Bishop of Lichfields Lent Appeal this year the donations will go to Church Funds. We would appreciate help from members of the congregation. Helpers are usually needed for serving and washing up but this year we will also need help with furniture removing. Listen out for appeals in church over the next few weeks.

---

### COVID UPDATES... An extract from the latest Lichfield Diocesan Bulletin

Following the Government's announcement on the easing of restrictions, ***face masks in venues including churches will no longer be mandatory from Thursday 27 January.***

Government guidance states: ***"From 27 January there is no longer a legal requirement to wear a face covering. The government suggests that you continue to wear a face covering in crowded and enclosed spaces where you may come into contact with other people you do not normally meet."***

We understand from the national Church that risk assessments will still be recommended to enable parishes to monitor their local situation. Please check the diocesan website and the Cof E website for further updates as available.

Some churches may feel it appropriate to still encourage people to wear face coverings and all will want to take into account the feelings of worshipers collectively, including those who are particularly vulnerable.

Please pray for your local hospitals, NHS staff and our health chaplains as they continue to experience high levels of pressure, and please contact your Archdeacon if you need to discuss any concerns or issues.



# WORLD DAY OF PRAYER



After a break from this annual joint event

with Endon Methodists last year I am pleased to say that a service will be held at the Methodist Church on FRIDAY 4TH MARCH at 2.00 pm. This year's service is written by the Christian women of England, Northern Ireland and Wales. **Sheila H**

### **An extract from the WDP website:**

*England, Wales and Northern Ireland fall within the group of islands known as the British Isles. Scotland is also part of the United Kingdom but has its own WDP organisation.*

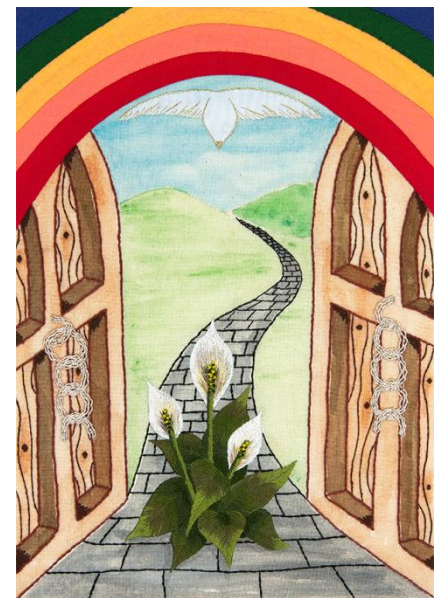
*We are small, about 80th in the world when countries are ranked according to area (under 165,000 square km or 64,000 square miles for England, Wales and Northern Ireland).*

*Wales is rural in character, straddled by mountains and bounded by a rugged coastline. Its large coalfields to the South provided a key export from cities such as Newport, Swansea and Cardiff.*

*Northern Ireland boasts Lough Neagh, one of the largest freshwater lakes in Western Europe, as well as the spectacular Giant's Causeway, a mass of interlocking basalt columns off the Antrim coast, caused by an ancient volcanic eruption.*

*England has less dramatic landscapes but has a spectacular coastline, especially in the West Country, while the north has lakes, mountains and large areas of moorland and forest. England has the highest level of urban development.*

*People have shaped our landscape, first through farming. Livestock grazed on hills, causing large areas of natural woodland to disappear. In the late Middle Ages, common land was enclosed by powerful feudal barons. In the 18th and 19th centuries, some parts of the country were depopulated, as industrialisation drew people from the countryside to growing towns and cities. Traditional family life is no longer the norm in England, Wales and Northern Ireland. The most common size, at 9,609,000 households, is two people. The second most common household size is one! A recent study found that the average age of a single woman getting married is now 30.8 years, up just over eight years from 1971, when the average was 22.6 years. In 2017, just over half of the population (51.0%) aged 16 years and over in England and Wales was married. Even though, we celebrated the progress women have made in our society, we still struggle to combat violence in our homes, improve the lives of those living in poverty and support those with disabilities, physical, mental and emotional. Life expectancy for women in the UK is 82 years.*







## Come follow Christ in the footsteps of St Chad

### PATHWAYS – HELPING TO FIND YOUR WAY...

I can honestly say that the greatest privilege of my job as the Diocesan Training Coordinator is being involved with Pathways. I love it.

Pathways is our course that has the tagline of 'a year of vocational reflection'. It's for anyone who is wondering about their calling/vocation/role/work (whichever word you want to use!) and who would like to spend some time thinking about this. It is truly humbling to hear people's stories and to encourage people to learn more about themselves and to embrace who they are!

We provide a space for you to ask questions, to discuss ideas and views, alongside talking about potential routes people could take after Pathways. Whilst we do look at ordination and reader training this course IS NOT just for people thinking about those paths. I always say to the groups that if someone gets to the end of the course and says 'Do you know what, I really feel I'm in the right place being a cleaner/teacher/shop assistant/CEO/stay at home parent/carer' then that's awesome and we've done our job right!

Pathways is for everyone – whether you are from the centre of the diocese, or the edge, whether you have never studied before or have a doctorate, whether you are theologically conservative or liberal – and everyone in between.

We run local groups across the diocese (numbers allowing) and an online Zoom group. The course consists of five evenings per term and three Saturday sessions. More information, including a video sharing comments from people who have previously done the course can be found on the diocesan website.

You can also contact me via email at [helen.scheven@lichfield.anglican.org](mailto:helen.scheven@lichfield.anglican.org)

*Helen Scheven is Lichfield Diocese's Training Coordinator*

*Read more about Pathways on the diocesan website:*

[lichfield.anglican.org/pathways-to-ministry](http://lichfield.anglican.org/pathways-to-ministry)



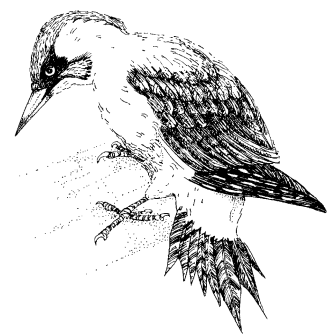
## A DIET OF ANTS

There are three woodpeckers native to the UK, Great Spotted, the rare Lesser Spotted and the largest of the three, the Green Woodpecker.

Although they look similar, Green

Woodpeckers are not closely related to the other two

woodpeckers and most importantly they don't peck wood! Where other woodpeckers





drum on hollow wood to advertise their presence, Green Woodpeckers have a loud, laughing call or 'yaffle'. Yaffle, Laughing Betsey and Yaffingale are all traditional names for this magnificent bird.

Green Woodpeckers can be seen in churchyards all year round and give a splash of colour in the winter months when there may not be much to be seen. They are bright green in colour with a yellow rump and red cap: look out for their swooping flight as they come to feed in churchyards.

The main food of Green Woodpeckers are ants, and they have an extraordinary tongue for pulling ants and ant larvae out of anthills. Their tongues are extremely long and sticky, for probing deep into the anthill and sucking up ants. Green Woodpeckers' tongues measure about 10cm, a third the length of the whole bird! When not feeding this long thin tongue is coiled within the birds' skull, resting behind their eyes and around their brains.

The yellow meadow ant which builds anthills in grassland is common in churchyards, so Green Woodpeckers have a year-round source of food. These anthills are a sign of ancient, traditionally managed meadow so, although hard to mow around, they are really special, please look after them. As well as feeding the woodpeckers they often have different plants growing on them, so look out for the flash of green and red followed by the laughing 'yaffle' and then, in the spring and summer see what plants you can find on your anthills too.

All the best, Harriet Carty

Diocesan Churchyard Environmental Advisor, [harriet@cfea.org.uk](mailto:harriet@cfea.org.uk),

[www.caringforgodsacre.org.uk](http://www.caringforgodsacre.org.uk) - individuals and groups in the diocese receive 20% members discount on all CfGA materials. Use the discount code Lich19

---

The **Methodist Church** 

**in Endon**

**THE COMMUNITY CAFÉ WILL  
OPEN AGAIN VERY SOON!**

**Rev Eleanor writes...**

We shall re-open on **7<sup>th</sup> February** and look forward to meeting you there. We will advertise the date on our noticeboards and on Facebook.





# CANDLE DEDICATIONS for FEBRUARY

For £2.50 you can keep the Candle of Hope or the Sanctuary Light burning for a week with a dedication.

*Please contact Shirley Brindley on 504089 as soon as possible if you would like a particular date.*

Feb	CANDLE OF HOPE	SANCTUARY LIGHT
6 <sup>th</sup>	Shirley Brindley in loving memory of Sue Barber, a very dear friend.	Marilyn Plant to celebrate the first birthday of her grandson, Logan Harris
13 <sup>th</sup>	Ann Boulton to celebrate the birthday of her grandson, Alfie	Mabel McGrath in loving memory of her brothers, William and Joseph
20 <sup>th</sup>	Ann Boulton to celebrate the birthday of her daughter-in-law, Helen	Linda Foster in loving memory of her mum on her birthday (27 <sup>th</sup> )
27 <sup>th</sup>	Sheila and Stan to celebrate the birthday of their daughter, Clare (March 4 <sup>th</sup> )	Sheila and Stan to celebrate the birthday of their grandson, William (1 <sup>st</sup> March)

**Happy Birthday!**



## FEBRUARY BIRTHDAY GREETINGS to

Robert Harrison (2<sup>nd</sup>), Dan Benson (6<sup>th</sup>),  
Amber Woolliscroft (10<sup>th</sup>), Jean Brough (11<sup>th</sup>),  
Sheila Hurst, Bertie Thomlins (17<sup>th</sup>),  
John Bradshaw jr (24<sup>th</sup>), Rev Alan (27<sup>th</sup>)

*If you would like your own or a family birthday included here please contact Ros 504137*

## A WALK AROUND KNYPERSLEY POOL

Eleven of us enjoyed a very pleasant walk around Knypersley Pool on the morning of Thursday, 20<sup>th</sup> January, organised by Shirley Brindley. We were grateful to Roger B and Barrie who took charge of James in his wheelchair. Despite some muddy patches, no-one fell over and we re-convened afterwards at Stockton Brook Golf Club for a light lunch at the café where we met up with Sue Forrester and Jean Brough. Thank you so much Shirley. A good time was had by all and we are looking forward to our next walk! **Ros**

# February Prayer Focus

- The build-up of thousands of Russian troops on the Ukrainian border
- The adults and children in Afghanistan who are starving and penniless after the Taliban take-over of their country
- Those without homes after the devastating typhoon in the Philippines and those in the Pacific islands of Tonga after the devastating tsunamis
- Those severely affected by the tornados which caused immense damage in the US state of Kentucky in December
- COP26 to result in the immediate co-operation of worldwide governments to combat climate change
- The plight of the many refugees making the dangerous Channel crossing in flimsy boats and what happens to them when they land on our shores
- The release of Iranian-British mother Nazanin Zaghari-Ratcliffe who has lost her appeal against a further 5 yr sentence and her husband Richard who is now on hunger strike
- The prospect of rocketing energy prices and those fearful of being unable to pay their bills this winter
- The challenge of those unwilling to be vaccinated against COVID
- Thankfulness for the lorry drivers who keep our supermarkets stocked
- What we can all do as individuals to combat climate change
- Those countries accepting refugees
- Citizens of poorer countries who have not yet had a COVID vaccine
- The release of Roman Protasevich in police detention in Minsk
- All medical staff worldwide battling COVID
- Our politicians as they make decisions which affect us all
- Improved safety for women on our streets
- Our police force and the challenges they face
- UK businesses and trade problems following the Brexit deals esp in N Ireland
- Thankfulness for those who have worked tirelessly to develop the COVID vaccines and those administering them
- A determination among folk to continue to adhere to government guidelines to stop the spread of infection
- The huge problem of loneliness
- Refugees everywhere especially in Yemen and the US border with Mexico
- All suffering at the hands of deeply corrupt governments
- Loved ones in our parish who are currently unwell
- Our church wardens and worship leaders during the interregnum
- Bishop Matthew and the appointment of our next incumbent
- Archdeacon Megan who took up her post in October
- The Church of England dealing with a shortage of clergy and funds
- Yemen – the on-going crisis and those trying hard to get aid into the country
- Those affected by the recent upsurge in knife crime
- The widespread drug problem especially in Stoke-on-Trent
- Lou Macari's hostel for the homeless in Hanley
- The problem of the millions of plastic bottles afloat in our oceans and the tons of 'space junk' orbiting our planet
- All who have lost loved ones recently
- The Trussell Trust food banks still needed as much as ever
- All children in danger of going hungry

Roger Simpson, St Luke's warden / worship leader / PCC chair	01782 502006
Barrie Jackson, reader / St Luke's PCC Sec / Administrator (* tel no for church enquiries)	07517 653370* 07510 074097
Sue Forrester, Flower & Craft Club / Foundation gov / Safeguarding Officer / St Luke's Facebook/sound desk	07854 043187
Deb Podmore, worship leader / Connections	01782 773383
Neil Taylor, worship leader / Connections	07961 652104
Sheila Simpson, St Luke's Electoral Roll Officer	01782 502006
June Pope, St Luke's warden's team	01782 503269
Shirley Brindley, candle dedications / pastoral tm	01782 504089
Steve Dale, St Luke's treasurer	07894 098011
Sheila Hurst, St Luke's Gift Aid Sec / MU rep	01782 503622
John & Julie Gater, Chernobyl Children's Project	01782 535000
James Benson, reader emeritus	01782 504137
Ros Benson, newsletter / St Luke's website	01782 504137
St Luke's vestry (church office)	01782 502166
Kath Howell, St Chad's PCC chair / warden / worship leader / safeguarding officer	01782 304616
Julia Podmore, St Chad's warden / treasurer	07980 802121
Pat Saul, St Chad's PCC vice-chair / secretary	07973 863930
Muriel Finney, St Chad's worship leader	01782 302229
Peter Millard, St Chad's buildings / warden's team	01782 505338
Emma Ashworth, St Chad's warden's team	07861 730806
Sheila Tipper, St Chad's news contact	01782 534647

For the duration of the interregnum the newsletter is available on-line as a PDF attachment and on the church website.

Paper copies are available for those without internet access.

Please contact Barrie if you would like a paper copy or know someone who would. Please submit notices for our next newsletter to Ros Benson

by **Tuesday, February 22nd**

either by e-mail [jandrbenson@btinternet.com](mailto:jandrbenson@btinternet.com) or phone 504137.

---

<sup>10</sup>This is what the LORD says: "When seventy years are completed for Babylon, I will come to you and fulfill my good promise to bring you back to this place. <sup>11</sup>**For I know the plans I have for you," declares the LORD, "plans to prosper you and not to harm you, plans to give you hope and a future.** <sup>12</sup>Then you will call on me and come and pray to me, and I will listen to you.

**JEREMIAH 29 v 10-12**

**The theme for this year's WORLD DAY OF PRAYER**